



Huskie
TOOLS

Precision Hydraulic Compression & Cutting Tools

www.huskietools.com

***When it's on the line,
you count on Huskie Tools.***

This catalog is dedicated to the hardworking line crews in North America.



Precision Hydraulic Compression & Cutting Tools

Table of Contents

Battery Operated Tools

REC-558U	6 Ton Battery Powered Compression Tool	11
REC-5ND	6 Ton Battery Powered Compression Tool	12
REC-CN558	6 Ton Battery Powered Compression Tool	13
REC-5630	6.2 Ton Battery Powered Crimping Tool	14
REC-5750	6.2 Ton Battery Powered Crimping Tool	15
REC-3410	12 Ton Battery Powered Compression Tool	16
REC-5430	12 Ton Battery Powered Compression Tool	17
REC-3510	12 Ton Battery Powered Compression Tool	18
REC-5510	12 Ton Battery Powered Compression Tool	19
REC-3510K	12 Ton Battery Powered Compression Tool	20
REC-5510K	12 Ton Battery Powered Compression Tool	21
REC-3610	15 Ton Battery Powered Crimping Tool	22
REC-MDT	Cartridgeless Wedge Connector	23
REC-530Y	6.6 Ton Battery Powered Scissor-Type Cutter	24
REC-534YC	6.6 Ton Battery Powered Scissor-Type Cutter	25
REC-560YC	6.6 Ton Battery Powered Scissor-Type Cutter	26
REC-585YC	9 Ton Battery Powered Scissor-Type Cutter	27
REC-50U	Battery Powered Gear-Driven Cable Cutter	28
REC-54AC	Battery Powered Gear-Driven Cable Cutter	29
REC-54	Battery Powered Gear-Driven Cable Cutter	30
REC-Y33	Battery Powered Gear-Driven Scissor Cutter	31
REC-S520	6.6 Ton Battery Powered Cutter	32
REC-S524H	8 Ton Battery Powered Cutter	33
REC-S524CC	8 Ton Battery Powered Cutter	34
REC-S540	8 Ton Battery Powered Cutter	35
REC-S3550	13 Ton Battery Powered Cutter	36
REC-P1	10,000 psi Battery Powered 28.8 Volt Pump	37

ECO line Battery Operated Tools

ECO-EZ	6 Ton Battery Powered Streamline Compression Tool	39
ECO-EZ558	6 Ton Battery Powered Streamline Compression Tool	40
ECO-258	6 Ton Battery Powered Compression Tool	41
ECO-ND	6 Ton Battery Powered Compression Tool	42
ECO-630	6.2 Ton Battery Powered Dieless Crimping Tool	43
ECO-750	6.2 Ton Battery Powered Compression Tool	44
BP-70EI, BP-70E		
BP-70MH	Batteries	45
CH-35R	Standard 25 Minute Quick Charge	46
CH-70DCH	12 Volt DC Charger	46

Hydraulic Compression Tools

CN-258	6 Ton Compression Tool w/Rubber Boot	49
EP-630A	6.2 Ton Dieless Crimping Tool	49
EP-750A	6.2 Ton Flip-Top Dieless Crimping Tool	50
EP-410	12 Ton Compression Tool w/Rubber Boot	50
EP-430	12 Ton Compression Tool	51
EP-510C	12 Ton Compression Tool w/Rubber Boot	51
EP-510K	12 Ton Compression Tool w/Rubber Boot	52
CN-58H	6 Ton Remote Compression C-Head w/Rubber Boot	52
EP-630HA	6.2 Ton Dieless Remote Crimping Head	53
EP-750HA	6.2 Ton Flip-Top Dieless Remote Crimping Head	53
EP-410H	12 Ton Remote Compression C-Head	54
EP-410HT	12 Ton Titanium C-Head	54
EP-430H	12 Ton Remote Compression C-Head	55
EP-510HC	12 Ton Remote Compression C-Head/Rubber Boot	55
EP-510HK	12 Ton Remote Compression C-Head	56
EP-610H	15 Ton Remote Compression C-Head	56
EP-60W (Steel), EP-60WT (Titanium)	Compression Head	57
EP-60D (Steel), EP-60DT (Titanium)	Double Acting Compression	58
EP-100WB, EP-200WA	Compression Heads	59
HT58-SERIES	"W" Type Dies	60
HT-SERIES	"O" Type Dies	60
HT41-SERIES	"U" Type Dies	61
HTK-SERIES	"WH-2" and "WH-3" Type Dies	62
HT61-SERIES	"P" Type Dies	62
HA60-SERIES	60 Ton Dies	63
HA100-SERIES	100 Ton Dies	63
Huskie Die Chart		64
Wire Rope Dies	12 Ton Compression "U" Type Dies	65
HTK CASE and DIE-CASE		65
Gauges		66

Hydraulic & Manual Cutting Tools

RI-500	Ratchet Cable Cutter	69
R-750B	Ratchet Cable Cutter	69
S-SERIES Chart		70
S-SERIES	Handheld Hydraulic Cutters	71
SP-SERIES Chart		72
SP-SERIES	Hydraulic Operated Remote Cutting Heads	73
YS-30, YSP-30	Handheld Hydraulic Scissor Cutter/Head	74
YS-34, YSP-34	Handheld Hydraulic Scissor Cutter/Head	75
YS-60, YSP-60 & YSP-85YC	Handheld Hydraulic Scissor Cutter/Heads	76
DA-12	Hydraulic Low Pressure 4" Cable Cutter	77
MC-500	Cable Slicer for Copper and Aluminum	77
AS-025 & AS-118	Cable Stripper for Semi-con and Secondary	78
NP-400	Insulation Stripper	78



Table of Contents

Hydraulic Pumps & Punches

HP-700	10,000 psi Hydraulic Hand Pump	81
FP-700	10,000 psi Hydraulic Foot Pump	81
R-14EF	1/2 HP, 10,000 psi Hydraulic Pump	82
R-14EA	3/4 HP, 10,000 psi Single Acting Hydraulic Pump	82
R-14EAD	3/4 HP, 10,000 psi Double Acting Hydraulic Pump	83
HPG-4	4 HP, Gas Engine 10,000 psi Hydraulic Pump	83
REC-P1	10,000 psi Battery Powered 28.8 Volt Pump	84
SH-70M	35 Ton Hydraulic Steel Punch	85
URH-14	Remote Control Handle	86
FS-14	Foot Switch	86
NC-SERIES	10,000 psi High Pressure Hydraulic Hose	87
NCH-1038	2,250 psi Low Pressure Hydraulic Hose	87
SC-SERIES	10,000 psi High Pressure Couplers	88
Hydraulic Oil		88

Additional Tooling & Accessories

25CAT	Optional Cutter Head Attachment	91
EZ-HLSTR	Huskie Holster	91
Huskie Accessories		92
HTI-240-1	Milwaukee 1/2" SQ. Drive Impact Wrench	93
HTI-260-1	Milwaukee Sawzall	94
ADBP-70	Battery Adapter for Milwaukee Tools	94
HH-SERIES	Huskie Hammer	95
Insulated Hand Tools		96
Cutting Tool Selection Guide		97
Compression Tool Selection Guide		97
ACSR Cutting Guide		98
Huskie Representative Directory		99-101
Authorized Service Centers		101



Huskie Ambassador
Joe Campbell, Line Mechanic A
IBEW Local #696
 Company: American Electric Power
 Hometown: St. Clairesville, OH



The Huskie Quality Advantage



Huskie Ambassador
Clyde Legg, General Foreman
Company: Davis H. Elliot
Dayton, OH

Clyde holds the REC-S540.

**Tools that make
your job easier,
reduce the risk
of injury, and
minimize worker
downtime.**

**"INSIST
on the best"**



VERSATILE

Small portable Huskie hydraulic cutters and compression tools eliminate the cost and labor time required for cartage and set up of cumbersome equipment. Huskie tools reduce labor costs because they work faster. You save money on maintenance because our tools last for 20 to 30 years or more with minimal maintenance. You also save the purchase, replacement, and maintenance costs of all the tools just one Huskie tool replaces.

CONVENIENT

Self-contained Huskie hydraulic tools are lightweight, portable, and user-friendly. No set up time is required. They cut with amazing speed and are ideal for close quarters, manholes, trenches, underwater, and in other environments where acetylene torches, electric cutters, and larger tools cannot be used. Their versatility makes them advantageous for a wide variety of applications.

SAFE

Hydraulic tools eliminate many risks of injury that are associated with conventional tools. The hydraulic mechanism does the work so there is little risk of continual strain on one muscle or group of muscles that could lead to injuries, lost time from work, or costly medical treatment.

QUALITY

Because of Huskie Tools' superior research and development programs, most of our tools have no competition. Each one is engineered for maximum user efficiency, convenience, and versatility. Our superior technology has led us to a whole new era of robotic cutting and compression tools such as the battery operated REC-3410 and REC-S520 which allow for one man operation. Huskie tools are engineered for rugged use and long life. That's why we back them 100% – Huskie's Quality Advantage. Huskie hydraulic tools are manufactured under the strict standards of ISO9001.

WARRANTY POLICY

Huskie tools carry a warranty that makes us a leader in the tool industry. No other manufacturer dares to back its tools as we do.

All Huskie REC-SERIES battery operated products carry a 5 year warranty. The ECO-SERIES battery operated products carry a 3 year or a 1 year warranty. The BP-70E, BP-70EI, and BP-70MH batteries carry a 5 year or 1,000 recharge cycles warranty from the date stamped on the battery. The LED indicators on the BP70EI battery carries a 1 year warranty from purchase date. Hydraulic hammers carry a one year warranty and all other Huskie products carry a 5 year warranty.

Huskie reserves the right to determine all warranty claims. Huskie will not warranty tools containing parts or batteries not originally supplied by Huskie. Failure due to misuse, abuse or repairs attempted by anyone other than Huskie Tools, Inc., or an authorized service center render this warranty null and void.

All factory repaired or reconditioned hydraulic tools carry a one year warranty on parts and labor.

Any Huskie tool may be returned for a free reconditioning once during the life of the tool. This includes general maintenance of the tool in good working order. Any repairs necessary at that time are subject to the foregoing repair statement.

REPAIR & WARRANTY CLAIMS

All claims must be sent to Huskie for inspection and authorization. Before shipping tools to Huskie, a Repair Goods Authorization is required. Secure the authorization online, by telephone or write to Huskie's main office with details of claim. Non-warranty repairs are handled using the same procedure. **Repairs exceeding 50% of the cost of a new tool will be advised before repairs are made.**

PAYMENT TERMS

Upon credit approval Huskie's standard payment terms are net-30 days.

FREIGHT

All Huskie tools are FOB, Glendale Heights, Illinois. Goods will be shipped pre-paid and added, unless otherwise specified. Freight shipments over \$15,000 are prepaid.

COMPLETE SUPPORT SERVICES

Our customers have direct access to us for training, service, and problem solving. As specialists in tools, we maintain a trained repair staff and a large stock of parts. This contrasts with many tool suppliers who carry tools as a sideline without offering support services.

- * Quick delivery. We maintain inventory at our headquarters.
- * Training and trouble-shooting services.
- * Fast repair service.
- * Free reconditioning of every tool, once during its lifetime.
- * Design and engineering service for special tool needs.
- * (800) 860-6170 Phone
- * (800) 345-3767 FAX
- * info@huskietools.com
- * Website: www.huskietools.com





ROBO BATTERY OPERATED TOOLS

All For One,

All for One, One for All

One Huskie 14.4 Volt
Battery allows you to
operate all of our ROBO
Battery Powered Cutting
and Crimping tools.



REC-5ND
P. 12



REC-5630
P. 14



REC-5750
P. 15



REC-5510K
P. 21



REC-3510
P. 18



REC-3610
P. 22



REC-558U
P. 11



REC-CN558
P. 13



REC-3510K
P. 20



REC-5510
P. 19



REC-5430
P. 17



REC-3410
P. 16



One For All.



REC-530Y
P. 24



REC-560YC
P. 26



REC-S520
P. 32



REC-534YC
P. 25



REC-585YC
P. 27



REC-S524H
P. 33



REC-S524CC
P. 34



REC-S540
P. 35



REC-S3550
P. 36



REC-54
P. 30

REC-50U
P. 28



REC-54AC
P. 29



REC-Y33
P. 31

Order Data

Standard ROBO*Kits

NOTE: Pricing will vary according to tool kit combination.

REC-558U ROBO*CRIMP	6 Ton Battery Powered Compression Tool - 1.8" Jaw Opening	p.11
REC-5ND ROBO*CRIMP	6 Ton Battery Powered Compression Tool - 1-3/8" Jaw Opening	p.12
REC-CN558 ROBO*CRIMP	6 Ton Battery Powered Compression Tool - .95" Jaw Opening	p.13
REC-5630 ROBO*CRIMP	6.2 Ton Battery Powered Dieless Crimping Tool - .90" Jaw Opening	p.14
REC-5750 ROBO*CRIMP	6.2 Ton Battery Powered Flip-Top Dieless Crimping Tool - 1.5" Jaw Opening	p.15
REC-3410 ROBO*CRIMP	12 Ton Battery Powered Compression Tool - 1" Jaw Opening	p.16
REC-5430 ROBO*CRIMP	12 Ton Battery Powered Compression Tool - 1-3/16" Jaw Opening	p.17
REC-3510 ROBO*CRIMP	12 Ton Battery Powered Compression Tool - 1.65" Jaw Opening	p.18
REC-5510 ROBO*CRIMP	12 Ton Battery Powered Compression Tool - 1.65" Jaw Opening	p.19
REC-3510K ROBO*CRIMP	12 Ton Battery Powered Compression Tool - 1.5" Jaw Opening	p.20
REC-5510K ROBO*CRIMP	12 Ton Battery Powered Compression Tool - 1.5" Jaw Opening	p.21
REC-3610 ROBO*CRIMP	15 Ton Battery Powered Compression Tool- 2" Jaw Opening	p.22
REC-MDT	Battery Powered Wedge Connector Installation Tool	p.23
REC-530Y ROBO*CUT	6.6 Ton Battery Powered Scissor-Type Cutter - 1-3/16" Jaw Opening	p.24
REC-534YC ROBO*CUT	6.6 Ton Battery Powered Scissor-Type Cutter - 1-3/8" Jaw Opening	p.25
REC-560YC ROBO*CUT	6.6 Ton Battery Powered Scissor-Type Cutter - 2.5" Jaw Opening	p.26
REC-585YC ROBO*CUT	9 Ton Battery Powered Scissor-Type Cutter - 3.3" Jaw Opening	p.27
REC-50U ROBO*SLICE	Battery Powered Gear-Driven Cable Cutter - 2" Jaw Opening	p.28
REC-54AC ROBO*SLICE	Battery Powered Gear-Driven Cable Cutter - 2-1/8" Jaw Opening	p.29
REC-54 ROBO*SLICE	Battery Powered Gear-Driven Cable Cutter -w- Notched Blade - 2-1/8" Jaw Opening	p.30
REC-Y33 ROBO* SLICE	Battery Powered Gear-Driven Scissor Cutter - 1-1/4" Jaw Opening	p.31
REC-S520 ROBO*CUT	6.6 Ton Battery Powered Cutter - .75" Jaw Opening	p.32
REC-S524H ROBO*CUT	8 Ton Battery Powered Cutter - .95" Jaw Opening	p.33
REC-S524CC ROBO*CUT	8 Ton Battery Powered Cutter - .95" Jaw Opening	p.34
REC-S540 ROBO*CUT	8 Ton Battery Powered Cutter - 1.6" Jaw Opening	p.35
REC-S3550 ROBO*CUT	13 Ton Battery Powered Cutter - 2" Jaw Opening	p.36
REC-P1 ROBO*PUMP	10,000 psi Battery Powered 28.8 Volt Pump	p.37, 84
ECO-EZ ROBO*CRIMP	6 Ton Battery Powered Streamline Compression Tool	p.39
ECO-EZ558 ROBO*CRIMP	6 Ton Battery Powered Streamline Compression Tool	p.40
ECO-258 ROBO*CRIMP	6 Ton Battery Powered Compression Tool - 1.8" Jaw Opening	p.41
ECO-ND ROBO*CRIMP	6 Ton Battery Powered Compression Tool - 1.4" Jaw Opening	p.42
ECO-630 ROBO*CRIMP	6.2 Ton Battery Powered Dieless Crimping Tool - .9" Jaw Opening	p.43
ECO-750 ROBO*CRIMP	6.2 Ton Battery Powered Flip-Top Dieless Crimping Tool - 1.5" Jaw Opening	p.44

Standard ROBO*Kits Include

- 1 Battery Powered Tool
- 1 Carrying Case
- 1 CH-35R, 25 minute AC Charger
- 2 BP-70E Batteries
- 1 Carrying Strap



All **ROBO*Kits** can be custom ordered to include optional batteries and/or chargers by adding the following suffixes to the standard kits listed below:

SM Includes 2 BP-70EI "smart" indicator batteries, replacing the 2 BP-70E batteries included in the standard kit.

DC Includes 1 CH-70DCH 12V DC charger, replacing the CH-35R charger included in the standard kit.

MH Includes 2 BP-70MH batteries, replacing the 2 BP-70E batteries included in the standard kit.

X Includes Tool and Case Only

Prices vary based on which kit is ordered.

Available Batteries and Chargers:

BP-70E	Standard High Capacity Replacement Battery
BP-70EI	LED Indicator High Capacity Replacement Battery
BP-70MH	High Capacity Replacement Battery – Nickel Metal Hydride
CH-35R	Standard 25 Minute AC Quick Charger
CH-70DCH	12V DC Charger



Model REC-558U ROBO*CRIMP™

6 Ton Battery Powered Compression Tool – 1.8" Jaw Opening



The Huskie **REC-558U** was designed to squeeze commonly used service entrance connectors, including lugs, sleeves, H-Taps and C-Taps. The rapid advance feature allows the operator quicker compression cycles. In addition to the rapid advance feature, it also has incorporated an electronic counter that will allow a service technician to read the number of compression cycles the tool has made. Also, the new tool housing has been reinforced to improve durability during heavy field use.

A factory pre-set bypass cartridge assures a six ton compression every time. The REC-558U accepts either "W", "O" or "X" type dies. The D3 nest die comes standard with the tool. Always consult your connector manufacturer for proper die/connector combinations.

Like the REC-458 and ECO-EZ558, the REC-558U will accept the optional 25CAT cutter head attachment. Quick release pins allow the operator to change between compression and cutter head in one minute with no springs or pins to lose.

For additional ordering information, please refer to page 10.

Accepts "W", "O" and "X" Type Dies

- See Page 60 for Available Huskie Dies

Specifications

Output	6 Ton
Weight	8 lbs. with Battery
Size	13"L x 12"H x 2.5"W
Jaw Opening	1.8"

Crimping Estimates

	BP-70E
#6 Cu/Al	210
1/0 Cu/Al	160
4/0 Cu/Al	125

Connector Range

Lugs and Splices	#8-500 MCM Cu #8-300 MCM Al
------------------	--------------------------------

H-Taps	Up to 4/0-4/0
--------	---------------

Optional Accessories

25CAT	Cutter Head, p. 91
HT58CUT	Cutter Die, p.60
ROB-358N	Insulated Jaw

Features

- One Hand Operation
- Tested Up to 75kV
- Rotational Head
- Rapid Advance
- Ergonomically Balanced
- Ergonomic Pistol Grip Handle
- Weather Resistant Housing
- Audible Bypass when Predetermined Pressure is Achieved
- Interchangeable Cutter Head



25CAT*
(optional)
p. 91

* Will not cut ALL 500 MCM copper cable-consult factory.

Model REC-5ND ROBO*CRIMP™

6 Ton Battery Powered Compression Tool – 1-3/8" Jaw Opening

Accepts "W", "O" and "X"
Type Dies

• See Page 60 for

Available Huskie Dies

Die compatibility varies by jaw.

Specifications

Output	6 Ton
Weight	9 lbs. with Battery
Size	14"L x 12"H x 2.5"W
Jaw Opening	1-3/8"

Crimping Estimates

	BP-70E
#6 Cu/Al	210
1/0 Cu/Al	160
4/0 Cu/Al	125

Connector Range

Lugs and Splices	#8-500 MCM Cu #8-300 MCM Al
H-Taps	Up to 4/0-4/0

Optional Accessories

ND-JAWN, O-JAWN, and BG-JAWN	Brush Contact Insulated Jaws
HT58CUT	Cutter Die, p. 60

Features

- One Hand Operation
- Tested Up to 75kV
- Rotational Head
- Rapid Advance
- Ergonomically Balanced
- Ergonomic Pistol Grip Handle
- Weather Resistant Housing
- Audible Bypass when Predetermined Pressure is Achieved
- 4 Compression Heads to Choose From



EZND

D3 Nest Die (no nose die) Snub Nose. Accepts "W" Style Dies.



EZO

D3 Nest Die with "O" Nose built-in. Accepts "W" Style Dies.



EZK

Takes Kearney "O" Type Dies. Does NOT Accept "W" Style Dies.



EZBG

D3 Nest Die with "BG" Nose built-in. Accepts "W" Style Dies.

The **REC-5ND** was designed with a snub-nose single groove jaw that has a D3 nest die and will accept "O" type dies. It is used to crimp commonly used service entrance connectors, including lugs, sleeves, H-Taps and C-taps. The snub nose design is physically smaller than the wooden handled tools, which is ideal for tight quarters, and the compression head rotates more than 350° for operator convenience.

In addition to the rapid advance feature incorporated into the new REC-5ND, it also has an electronic counter that allows a service technician to read the number of compression cycles the tool has made. Also, the new tool housing has been reinforced to improve durability during heavy field use.

For additional ordering information, please refer to page 10.



Model REC-CN558 ROBO*CRIMP™

6 Ton Battery Powered Compression Tool – .95" Jaw Opening



Accepts "W", "O" and "X" Type Dies

- See Page 60 for Available Huskie Dies

Specifications

Output	6 Ton
Weight	9 lbs. with Battery
Size	13"L x 12"H x 2.5"W
Jaw Opening	.95"

Crimping Estimates

	BP-70E
#6 Cu/Al	210
1/0 Cu/Al	160
4/0 Cu/Al	125

Connector Range

Lugs and Splices	#8-500 MCM Cu #8-300 MCM Al
H-Taps	Up to 4/0-4/0

Optional Accessory

HT58CUT	Cutter Die, p. 60
---------	-------------------

Features

- One Hand Operation
- Tested Up to 75kV
- Rotational Head
- Rapid Advance
- Ergonomically Balanced
- Ergonomic Pistol Grip Handle
- Weather Resistant Housing
- Audible Bypass when Predetermined Pressure is Achieved
- Open C-Head Design

The Huskie **REC-CN558** is an open jaw version of the REC-558U latched type tool. The open jaw can easily fit into tight situations where the closing of a jaw latch would be a problem. The jaw is covered with a rubber boot designed to provide some insulated protection against "brush" contact with energized cables. The tool should not be used as an insulated tool since the dies and die holding pins are always exposed.

The head can be turned 180° and positioned to accommodate the operator's work methods. A complete cycled compression is accomplished by the simple squeeze of a trigger. A factory preset by-pass cartridge assures a complete compression every time. Its 6-ton output is equal to any comparable handheld, hydraulic compression tool and far exceeds any mechanical crimper. The REC-CN558 is supplied with D3 nest dies, which can be interchanged with Kearney, or T&B "O" type dies. If you wish to use the Huskie or another brand of "W" type dies, simply slide them over the D3 nest dies and snap in position. The output pressure, of the REC-CN558 can be checked with Huskie's PG-15 pressure gauge when necessary.

For additional ordering information, please refer to page 10.

Model REC-5630 ROBO*CRIMP™

6.2 Ton Battery Powered Dieless Crimping Tool – .90" Jaw Opening

Specifications

Output	6.2 Ton
Weight	11.5 lbs. with Battery
Size	14"L x 13"H x 2.5"W
Jaw Opening	.90"
Center Opening	1.25"

Crimping Estimates

	BP-70E
1/ Cu/Al	75
500 MCM Cu	90

Connector Range

Lugs and Splices	10 AWG-500 MCM
------------------	----------------

Features

- One Hand Operation
- Tested Up to 75kV
- Rotational Head
- Rapid Advance
- Ergonomically Balanced
- Ergonomic Pistol Grip Handle
- Weather Resistant Housing
- Audible Bypass when Predetermined Pressure is Achieved
- Designed to crimp Anderson connectors & other brand connectors manufactured to ANSI C119.4
- Eliminates the Need for Dies



The **REC-5630** is a battery operated, dieless compression tool used to compress Anderson style lugs. Six tons of compression force are achieved when the tool advances and bypasses at the predetermined pressure. Advance and retract buttons on the tool handle allow for one hand operation, freeing the other hand to maneuver the cable. The REC-5630 is designed to crimp Anderson Style connectors. Other brand connectors manufactured to ANSI specifications C119.4 can be used. For range-taking connectors, the cable must be maximum size specified for the connector. Consult your connector manufacturer for dieless applications.

NOTE: For range taking connectors, the cable must be the maximum size specified for the connector. Consult your connector manufacturer for dieless applications.

For additional ordering information, please refer to page 10.



Model REC-5750 ROBO*CRIMP™

6.2 Ton Battery Powered Flip-Top Dieless Crimping Tool – 1.5" Jaw Opening



Specifications

Output	6.2 Ton
Weight	12 lbs. with Battery
Size	15.5"L x 13"H x 2.5"W
Jaw Opening	1.5"

Crimping Estimates

	BP-70E
1/0 Cu/Al	75
500 MCM Cu	90

Connector Range

Lugs and Splices	#6 AWG–750 MCM
------------------	----------------

Features

- One Hand Operation
- Tested Up to 75kV
- Rotational Head
- Rapid Advance
- Ergonomically Balanced
- Ergonomic Pistol Grip Handle
- Weather Resistant Housing
- Audible Bypass when Predetermined Pressure is Achieved
- Designed to crimp Anderson connectors & other brand connectors manufactured to ANSI C119.4
- Flip-Top Head Design
- Eliminates the Need for Dies

The **REC-5750** is a flip-top, dieless tool used to crimp cables up to 750 MCM. The flip top latch opens to allow for easy cable positioning and removal. The dieless system is used for non-tension splices and terminations. There is one stationary and three movable indenting nibs which close at 90° angles to each other so that the connector is squeezed equally at four strategic points with 6 tons of force. The top can be unlatched to accommodate larger size lugs and cables up to 750 MCM. Typical applications include in-line splicing connectors and lug terminations. The REC-5750 is designed to crimp Anderson Style connectors. Other brand connectors manufactured to ANSI specifications C119.4 can be used. For range-taking connectors, the cable must be maximum size specified for the connector. Consult your connector manufacturer for dieless applications.

It also has an external bypass cartridge for faster pressure adjustment & repair times.

NOTE: For range taking connectors, the cable must be the maximum size specified for the connector. Consult you connector manufacturer for dieless applications.

For additional ordering information, please refer to page 10.

Model REC-3410 ROBO*CRIMP™

12 Ton Battery Powered Compression Tool – 1" Jaw Opening

Accepts "U" Type Dies

- See Page 61 for Available Huskie Dies

Specifications

Output	12 Ton
Weight	19 lbs. with Battery
Size	18"L x 10.5"H x 3.5"W
Jaw Opening	1"

Crimping Estimates

	BP-70E
4/0 Cu	75
500 MCM Cu	50

Connector Range

Lugs	#8 AWG - 750 MCM Cu #10 AWG - 750 MCM Al
Splices	#8 AWG - 400 MCM Cu #10 AWG - 400 MCM Al

Features

- Tested Up to 75kV
- Rotational Head
- Rapid Advance
- Ergonomically Balanced
- Weather Resistant Housing
- Audible Bypass when Predetermined Pressure is Achieved
- Includes DIE-CASE
- Protective Rubber Boot on "C" Head



Huskie is giving you more tool speed and easier handling with our **REC-3410** battery powered compression tool. It features a rubber boot and it is designed to accommodate all 12 ton "U" type dies widely used throughout the electrical industry.

The REC-3410 is faster and more compact than our previous model. It offers a wider handle opening with finger grooves, allowing easier access for gloved work. The base of the tool is contoured for stability and incorporates finger grooves for a better grip.

For additional ordering information, please refer to page 10.



Model REC-5430 ROBO*CRIMP™

12 Ton Battery Powered Compression Tool– 1-3/16" Jaw Opening



Accepts "U" Type Dies

- See Page 61 for Available Huskie Dies

Specifications

Output	12 Ton
Weight	14.75 lbs. with Battery
Size	15.5"L x 12"H x 3"W
Jaw Opening	1-3/16"

Crimping Estimates

	BP-70E
500 MCM Cu	50
750 MCM Cu	35

Connector Range

Lugs	750 MCM Cu/Al
Splices	600 MCM Cu/Al

Optional Accessory

DIE-CASE	Die Case, p. 65
----------	-----------------

Features

- One Hand Operation
- Tested Up to 75kV
- Rotational Head
- Rapid Advance
- Ergonomically Balanced
- Ergonomic Pistol Grip Handle
- Weather Resistant Housing
- Audible Bypass when Predetermined Pressure is Achieved
- Protective Rubber Boot on "C" Head

The **REC-5430** weighing just 14.75 pounds was specifically designed for use in single-handed operation in overhead applications such as cable trays. This allows one hand to control the work while the other hand is free to operate the tool. It also eliminates the cumbersome hoses and larger, heavier tools traditionally used in overhead work.

The REC-5430 was designed from the same hydraulic system as our REC-558U featuring a rapid advance ram to reduce cycle time. It accepts all 12 ton "U" type dies and is capable of 750 MCM copper lugs and 600 MCM copper splices.

For additional ordering information, please refer to page 10.

Model REC-3510 ROBO*CRIMP™

12 Ton Battery Powered Compression Tool – 1.65" Jaw Opening

Accepts "U" Type Dies

- See Page 61 for Available Huskie Dies

Specifications

Output	12 Ton
Weight	20 lbs. with Battery
Size	19"L x 10.5"H x 3.5"W
Jaw Opening	1.65"

Crimping Estimates

	BP-70E
500 MCM Cu	50
750 MCM Cu	35

Connector Range

Lugs and Splices	750 MCM Cu/Al
------------------	---------------

Features

- Tested Up to 75kV
- Rotational Head
- Rapid Advance
- Ergonomically Balanced
- Weather Resistant Housing
- Audible Bypass when Predetermined Pressure is Achieved
- Includes DIE-CASE
- Protective Rubber Boot on "C" Head
- UL Classified



The Huskie **REC-3510** is the largest in our line of battery operated 12 ton compression tools. The jaw opening is 1.65" and will accept mid-span copper and aluminum splices and lugs up to 750 MCM Cu/Al. When the sleeves are compressed they can be removed through the large jaw. This tool accepts all "U" type dies available on the market.

A built-in, preset 10,000 psi bypass cartridge will audibly bypass when optimal pressure is achieved. Test dies accompanied with our PG-4 can confirm the output pressure when needed. The output pressure can be adjusted via a bypass port located at the top of the tool. This tool has the most universal range of all our self-contained ROBO* tools.

For additional ordering information, please refer to page 10.



Model REC-5510 ROBO*CRIMP™

12 Ton Battery Powered Compression Tool – 1.65" Jaw Opening



Accepts "U" Type Dies

- See Page 61 for Available Huskie Dies

Specifications

Output	12 Ton
Weight	15 lbs. with Battery
Size	16"L x 12"H x 3"W
Jaw Opening	1.65"

Crimping Estimates

	BP-70E
4/0 Cu	75
500 MCM Cu	50

Connector Range

Lugs and Splices	Up to 750 MCM Cu/Al
------------------	---------------------

Optional Accessory

DIE-CASE	Die Case, p. 65
----------	-----------------

Features

- One Hand Operation
- Tested Up to 75kV
- Rotational Head
- Rapid Advance
- Ergonomically Balanced
- Ergonomic Pistol Grip Handle
- Weather Resistant Housing
- Audible Bypass when Predetermined Pressure is Achieved
- Protective Rubber Boot on "C" Head

The **REC-5510** was specifically designed for use in single-handed operation in overhead applications such as cable trays. This allows one hand to control the work while the other hand is free to operate the tool. It also eliminates the cumbersome hoses and larger, heavier tools traditionally used in overhead work.

The Huskie REC-5510 has the same jaw opening as our REC-3510 battery operated 12-ton compression tool. The opening is 1.65" which will accept mid-span copper and aluminum splices and lugs up to 750 MCM Cu/Al. This tool accepts all "U" type dies available on the market.

Portability and handling are made easier because the REC-5510 system is self contained and compact. The new rapid advance system reduces tool run time, giving you more crimp cycles per battery charge. A built-in, pre-set 10,000 psi bypass cartridge will audibly "by-pass" when the optimal pressure is achieved.

For additional ordering information, please refer to page 10.

Model REC-3510K ROBO*CRIMP™

12 Ton Battery Powered Compression Tool – 1.5" Jaw Opening

Accepts "WH-2", PH-2" and
"WH-3" Type Dies

- See Page 62 for
Available Huskie Dies

Specifications

Output	12 Ton
Weight	20 lbs. with Battery
Size	19"L x 10.5"H x 3.5"W
Jaw Opening	1.5"

Crimping Estimates

	BP-70E
500 MCM Cu	65
750 MCM Cu	45

Connector Range

Lugs	1033 ACSR
Splices	477 ACSR

Optional Accessories

UDK-1	"U" Die Adapter, p. 92
HTK-CASE	WH-2, PH-2, WH-3 Die Specific Case, p. 65

Features

- Tested Up to 75kV
- Rotational Head
- Rapid Advance
- Ergonomically Balanced
- Weather Resistant Housing
- Audible Bypass when Predetermined Pressure is Achieved
- Includes DIE-CASE
- Protective Rubber Boot on "C" Head



The **REC-3510K** battery powered compression tool is designed to accept Kearney WH-2, PH-2, and WH-3 style dies. It has a full 12 ton capacity and its 1.5" jaw opening accepts lugs up to 1033 MCM.

The upgraded REC-3510K is faster and more compact than our previous model. It offers a wider handle opening with finger grooves, allowing easy access for gloved work. The base of the tool is contoured for stability and incorporates finger grooves for a better grip.

For additional ordering information, please refer to page 10.



Model REC-5510K ROBO*CRIMP™

12 Ton Battery Powered Compression Tool – 1.5" Jaw Opening



The **REC-5510K** battery powered compression tool is designed to accept Kearney WH-2, PH-2 and WH-3 style dies. Weighing just 16.5 pounds it was specifically designed for use in single-handed operation in overhead applications such as cable tray. It also eliminates the cumbersome hoses and larger, heavier tools traditionally used in overhead work.

The REC-5510K was designed from the same hydraulic system as our REC-558U featuring a rapid advance ram to reduce cycle time. It has a full 12-ton capacity and its 1.5 inch jaw opening accepts lugs up to 1033 MCM. Compression head rotates 360° for use in any position.

For additional ordering information, please refer to page 10.

Accepts "WH-2", PH-2" and "WH-3" Type Dies

• See Page 62 for Available Huskie Dies

Specifications

Output	12 Ton
Weight	16.5 lbs. with Battery
Size	16"L x 12"H x 3"W
Jaw Opening	1.5"

Crimping Estimates

	BP-70E
500 MCM Cu	50
750 MCM Cu	35

Connector Range

Lugs	1033 ACSR
Splices	477 ACSR

Optional Accessories

UDK-1	"U" Die Adapter, p. 92
HTK-CASE	WH-2, PH-2, WH-3 Die Specific Case, p. 65

Features

- One Hand Operation
- Tested Up to 75kV
- Rotational Head
- Rapid Advance
- Ergonomically Balanced
- Ergonomic Pistol Grip Handle
- Weather Resistant Housing
- Audible Bypass when Predetermined Pressure is Achieved
- Protective Rubber Boot on "C" Head

Model REC-3610 ROBO*CRIMP™

15 Ton Battery Powered Compression Tool – 2" Jaw Opening

Accepts "P" Type Dies

- See Page 62 for Available Huskie Dies

Specifications

Output	15 Ton
Weight	24 lbs. with Battery
Size	21.5" L x 10.5" H x 3.5" W
Jaw Opening	2"

Crimping Estimates

	BP-70E
1000 MCM Cu	30

Connector Range

Aluminum	#8 AWG-1250 MCM
Copper	#8 AWG-1500 MCM
H-Tap	Up to 750/750

Optional Accessory

PU-15	"U" Die Adapter, p.92
-------	-----------------------

Features

- Tested Up to 75kV
- Rotational Head
- Rapid Advance
- Ergonomically Balanced
- Weather Resistant Housing
- Audible Bypass when Predetermined Pressure is Achieved
- Includes DIE-CASE
- Protective Rubber Boot on Head
- Flip-Top Rotating Head
- External Pressure Adjustment



The **REC-3610** is our 15 ton compression tool that is able to crimp splices and lugs up to 1250 MCM aluminum and 1500 MCM copper. The REC-3610 offers a wide handle opening with finger grooves, allowing easy access for gloved work.

The base of the tool is contoured for stability and incorporates finger grooves for a better grip. The tool has a latched head and its pull-out release pin cannot be entirely removed from the jaw. The jaw opens wide to accept all "P" type dies used in the industry today. The PU-15 die adapter is available for use with all 12 ton "U" type dies.

For additional ordering information, please refer to page 10.



Model REC-MDT

Battery Powered Wedge Connector Installation Tool



Small Head for
MDT

The **REC-MDT** is a precision battery actuated hydraulic tool, designed to install AMPACT tap and stirrup connectors without the use of powder actuated cartridges.

The REC-MDT will interchange with any Huskie tool 14.4 Volt battery in your tool arsenal. The proven AMPACT tap "C-component" and wedge design provides a stored energy system that prevents connector degradation and achieves extremely low contact resistance over the "in-service" life of the connector.*

As thermal cycling causes the conductors to expand and contract, the AMPACT tap spring member flexes and maintains constant contact pressure.

With the small AMPACT tool head mounted on REC-MDT tool, the user can install taps up to 350 kcmil (AWG). By attaching the large head to the same tool body the tap range is expanded to cover conductors sizes ranging from 477 kcmil to 3500 kcmil.

The tool compliments AMPACT connectors' legendary performance, backed up by over 50 years of satisfactory service. The "green" revolution (cartridgeless tooling) has started and it's lead by the Huskie REC-MDT tool!

For additional ordering information, please refer to page 10.

Specifications

Output	Adjustable 6-9 Tons
Weight (Large Head)	14.5 lbs. with Battery
Weight (Small Head)	11.2 lbs. with Battery
Size (Large Head)	13.5"H x 2.25"W x 20.5"L
Size (Small Head)	13.5"H x 2.25"W x 18"L

Tap Color Code	Tap Type	Wire Size
White	Aluminum	8-1/0
	Copper	1/0-250
Blue	Aluminum	4/0
	Aluminum	266.8
	Aluminum	350
	Copper	1/0-500
Yellow	Aluminum	336.4
		477
		556.5
		795
		1033.5
		1192.5

Features

- One Hand Operation
- Rotational Head
- Rapid Advance
- Ergonomic Pistol Grip Handle
- Weather Resistant Housing
- Audible Bypass when Predetermined Pressure is Achieved
- 100% Environmentally Friendly
- Features an integrated external adjustment valve that precisely matches output pressure of the tool to the requirements of the color coded Tyco Electronics AMPACT tap connector system.

* Can not be used with Standard AMPACT style connectors. Consult factory for information on special connectors.

Model REC-530Y ROBO*CUT™

Battery Powered Scissor-Type Cutter – 1-3/16" Jaw Opening

Specifications

Output	6.6 Ton
Weight	11.4 lbs. with Battery
Size	15"L x 12"H x 2.5"W
Jaw Opening	1-3/16"

Crimping Estimates

	BP-70E
500 MCM Cu	90

Cutting Capacities

Bar	DO NOT CUT
ACSR	336 MCM
Copper	500 MCM*
Aluminum	1.18" O.D.
Standard Guy Wire	3/8" Max.

Features

- Open Scissor Jaw for Easy Cable Insertion
- Tested Up to 75kV
- One Hand Operation
- Rotational Head
- Rapid Advance
- Ergonomically Balanced
- Ergonomic Pistol Grip Handle
- Weather Resistant Housing
- Overload Bypass Protection

* Will not cut ALL 500 MCM copper cable-consult factory.

Due to material composition, the ratings are to be used as a guide. Actual capacity may vary due to "bypass" feature.



The **REC-530Y** was designed to cut ACSR cables up to 336 MCM, as well as copper cables up to 500 MCM and aluminum cables up to 1.18" outside diameter.

The hydraulic system features a rapid advance for reduced cycle times. All cuts are clean with a minimal amount of cable distortion, which allows for easy connector installation on cables. The open "C" type jaw is very convenient for the operator when reaching out to cut cable opposed to latching the cutter jaw around the cable. The head can be rotated 180° for greater maneuverability in tight working quarters. The keeper plate on the REC-530Y prevents jaws from spreading apart when cutting ACSR.

NOTE: This tool is not recommended for cutting 4/0 Penguin or 3/0 Pigeon ACSR Cables, see cutting guide on page 98.

For additional ordering information, please refer to page 10.



Model REC-534YC ROBO*TMCUTTM

Battery Powered Scissor-Type Cutter 1-3/8" Jaw Opening



Specifications

Output	6.6 Ton
Weight	11 lbs. with Battery
Size	15"L x 12"H x 2.5"W
Jaw Opening	1-3/8"

Cutting Estimates

	BP-70E
500 MCM Cu	110
750 MCM Cu	75

Cutting Capacities

ACSR	DO NOT CUT
Copper	800 MCM
Aluminum	1.4" O.D.

Features

- Open Scissor Jaw for Easy Cable Insertion
- Tested Up to 75kV
- One Hand Operation
- Rotational Head
- Rapid Advance
- Ergonomically Balanced
- Ergonomic Pistol Grip Handle
- Weather Resistant Housing
- Overload Bypass Protection
- For Copper and Aluminum Only

Due to material composition, the ratings are to be used as a guide. Actual capacity may vary due to "bypass" feature.

Large copper cable cutting is finally made easy with the **REC-534YC** – just pull the trigger and 6.6 tons immediately goes to work for you. The hydraulic system now features a rapid advance for reduced cycle times. This tool is similar to the REC-530Y, but has a slightly larger jaw opening without a "keeper" guard. Its sharp blades are rated for copper and aluminum cables only, up to 800 MCM or 1.4" Al outside diameter.

The open "C" type jaw is very convenient for the operator when reaching out to cut cable, as opposed to latching a cutting jaw around the cable. The jaws will accept a maximum of 800 MCM copper or aluminum cables up to 1.4". Distortion of the cable is minimal and cables can still be sleeved easily. Once the cable is severed, the cutter blades can be opened by the push of the release trigger located below the activation trigger – one finger is all that is needed to cut and release the tool.

NOTE: DO NOT CUT STEEL.

For additional ordering information, please refer to page 10.

Model REC-560YC ROBO*CUT™

Battery Powered Scissor-Type Cutter – 2.5" Jaw Opening

Specifications

Output	6.6 Ton
Weight	11.3 lbs. with Battery
Size	16"L x 12"H x 2.5"W
Jaw Opening	2.5"

Cutting Estimates

	BP-70E
500 MCM Al	110
500 MCM Cu	90

Cutting Capacities

ACSR	DO NOT CUT
Copper	500 MCM*
Aluminum	2" O.D.

Features

- Open Scissor Jaw for Easy Cable Insertion
- Tested Up to 75kV
- One Hand Operation
- Rotational Head
- Rapid Advance
- Ergonomically Balanced
- Ergonomic Pistol Grip Handle
- Weather Resistant Housing
- Overload Bypass Protection
- Specifically Designed to Cut Large Jacketed Underground Cable
- For Copper and Aluminum Only*

* Will not cut ALL 500 MCM copper cable-consult factory.

Due to material composition, the ratings are to be used as a guide. Actual capacity may vary due to "bypass" feature.



The **REC-560YC** works well for most underground aluminum cable cutting applications. It was designed to cut copper cables up to 500 MCM and aluminum up to 2" maximum outside diameter. The extra wide jaws make cutting the larger diameter underground cables easier. The hydraulic system is designed the same as the REC-558U featuring a rapid advance ram to reduce cycle time.

Because of the larger cutting surface of the blades, the maximum size copper cable that can be cut is 500 MCM. Larger cables will simply cause the cutter to bypass, which is a built-in overload safety device to prevent damage to the tool.

The large jaws can be placed over cables that lie flat on the ground and the cables will be scooped up as the cutting jaws are closed. All cuts are clean so that there is minimal cable distortion for cable sleeving purposes.

NOTE: DO NOT CUT STEEL.

For additional ordering information, please refer to page 10.



Model REC-585YC ROBO*[®]CUT™

Battery Powered Scissor-Type Cutter – 3.3" Jaw Opening



The **REC-585YC** is designed to cut copper and aluminum cables as well as lead-sheathed telecommunication cables. The extremely large jaws and scissor-type blades allow for easy cutting of large underground cables. The sidebar handle allows the user to stabilize and balance the tool.

This tool also has a built-in bypass cartridge to avoid cutter damage for those cables that are beyond the cutter's capacity. The open jaw design allows the user to scoop up cables that are against a wall, in hard to reach areas and on the ground.

NOTE: DO NOT CUT STEEL.

For additional ordering information, please refer to page 10.

Specifications

Output	9 Ton
Weight	15.5 lbs. with Battery
Size	20"L x 12"H x 8"W
Jaw Opening	3.3"

Cutting Estimates

	BP-70E
1000 MCM Cu	50
1000 MCM Al	75

Cutting Capacities

ACSR	DO NOT CUT
Aluminum	3"
Copper	1000 MCM
Telecommunication	3"
Lead Sheath	2.5"

Features

- Open Scissor Jaw for Easy Cable Insertion
- Tested Up to 75kV
- One Hand Operation
- Rotational Head
- Rapid Advance
- Ergonomically Balanced
- Ergonomic Pistol Grip Handle
- Weather Resistant Housing
- Overload Bypass Protection
- Sidebar Handle for Stability and Balance
- For Copper and Aluminum Only

Due to material composition, the ratings are to be used as a guide. Actual capacity may vary due to "bypass" feature.

Model REC-50U ROBO*SLICE™

Battery Powered Gear-Driven Cable Cutter – 2" Jaw Opening

Specifications

Weight	6 lbs. with Battery
Size	14.5"H x 4"L x 4.5"W
Jaw Opening	2"

Cutting Estimates

	BP-70E
1000 MCM Cu	35
1500 MCM Al	45

Cutting Capacities

Aluminum	1500 MCM
Copper	1000 MCM*

Features

- Tested Up to 75kV
- One Hand Operation
- Ergonomically Balanced
- Weather Resistant Housing
- Overload Circuit Breaker Protection
- For Copper and Aluminum Only

*Due to material composition, the ratings are to be used as a guide. Actual capacity may vary due to overload circuit breaker protection feature.

DO NOT CUT STEEL OR ACSR. Consult factory for more information on cutting copper cable.



The **REC-50U** battery operated slicing tool cuts 2" cable with the touch of a finger. It features a powerful gear reduction motor that pulls a moveable blade through the toughest copper and aluminum cables.

The ROBO*SLICE comfortably fits into the lineman's gloved hand, and repetitive ratcheting movement is entirely eliminated. Just a squeeze of the rocker arm trigger is all it takes to make a cut and almost no muscle power is needed. As a result, the risk of sprains, strains, and lost time due to muscle related injuries can be significantly reduced.

The moveable blade has wide gear teeth for extra power and full cutting traction. Gear guides are attached on both ends of the movable blade to align the gear teeth with the internal pinion gear.

For additional ordering information, please refer to page 10.



Model REC-54AC ROBO*SLICE™

Battery Powered Gear-Driven Cable Cutter – 2-1/8" Jaw Opening



The **REC-54AC** was designed to cut stranded copper cables, and aluminum. The jaws will accept a maximum of 1500 MCM aluminum. The operation of this tool is the same as the REC-54, but it has sharper blades for cutting only non-ferrous materials. Do not cut steel with this model, or blade damage will occur.

The ROBO*SLICE comfortably fits into the lineman's gloved hand, and repetitive ratcheting movement is entirely eliminated. Just a squeeze of the rocker arm trigger is all it takes to make a cut and almost no muscle power is needed. As a result, the risk of sprains, strains, and lost time due to muscle related injuries can be significantly reduced.

The moveable blade has wide gear teeth for extra power and full cutting traction. Gear guides are attached on both ends of the movable blade to align the gear teeth with the internal pinion gear.

For additional ordering information, please refer to page 10.

Specifications

Weight	7.2 lbs. with Battery
Size	16"H x 4"L x 4.5"W
Jaw Opening	2-1/8"

Cutting Estimates

	BP-70E
1000 MCM Cu	25
1500 MCM Al	30

Cutting Capacities

Copper	1000 MCM*
Aluminum	1500 MCM

Features

- Tested Up to 75kV
- One Hand Operation
- Ergonomically Balanced
- Weather Resistant Housing
- Overload Circuit Breaker Protection
- For Copper and Aluminum Only*
- Specifically Designed to Cut Large Jacketed Underground Cable

*Due to material composition, the ratings are to be used as a guide. Actual capacity may vary due to overload circuit breaker protection feature.

DO NOT CUT STEEL OR ACSR. Consult factory for more information on cutting copper cable.

Model REC-54 ROBO*SLICE™

Battery Powered Gear-Driven Cable Cutter with Notched Blade – 2-1/8" Jaw Opening

Specifications

Weight	7.2 lbs. with Battery
Size	16"H x 4"L x 4.5"W
Jaw Opening	2-1/8"

Cutting Estimates

	BP-70E
636 ACSR	50

Cutting Capacities

Copper	Consult Factory*
Aluminum	Consult Factory*
ACSR	636 MCM

Features

- Tested Up to 75kV
- One Hand Operation
- Ergonomically Balanced
- Weather Resistant Housing
- Overload Circuit Breaker Protection

* Consult factory for more information on cutting copper and aluminum cable.

Due to material composition, the ratings are to be used as a guide. Actual capacity may vary due to overload circuit breaker protection feature.



The **REC-54** is a heavy duty cable cutter used to cut ACSR up to 636, and limited sizes of copper and aluminum cable. Huskie has notched both cutting blades to avoid the denting of the cutting surfaces when steel strand is encountered.

This tool also incorporates a blade retainer, which keeps the blades from spreading apart while cutting steel cables. The REC-54 was designed for single and multi-stranded steel cores and aluminum cables. It will not cut ground rods or thick steel stranded guy wires.

It features a lock-out switch for reversing the blade, all with one-handed operation. The powerful gear drive allows the operator to cut through the toughest cables with just the pull of the trigger.

NOTE: The REC-54 will not cut guy wires, ground rod or bolts.

For additional ordering information, please refer to page 10.



Model REC-Y33 ROBO*SLICE™

Battery Powered Gear-Driven Scissor Cutter – 1-1/4" Jaw Opening



The **REC-Y33** cable cutter is used to cut up to 636 ACSR and up to 500 MCM* copper cables. The open jaw makes it easy to insert cables for one handed operation. The jaw, which incorporates a blade retainer, keeps the blade from spreading apart when cutting cable with a steel core.

It features a lock-out switch for reversing the blade direction all-with one handed operation. The powerful gear drive allows the operator to quickly cut some of the toughest cables with ease.

NOTE: The REC-Y33 will not cut guy wire, ground rod anchor rod or bolts.

For additional ordering information, please refer to page 10.

Specifications

Weight	7.2 lbs. with Battery
Size	16"H x 4"L x 4.5"W
Jaw Opening	1-1/4"

Cutting Estimates

	BP-70E
636 ACSR	50

Cutting Capacities

Copper	500 MCM*
Aluminum	Up to 1-1/4" O.D.
ACSR	636 MCM

Features

- Tested Up to 75kV
- One Hand Operation
- Ergonomically Balanced
- Weather Resistant Housing
- Overload Circuit Breaker Protection

* Consult factory for more information on cutting 500 MCM copper cable.

Due to material composition, the ratings are to be used as a guide. Actual capacity may vary due to overload circuit breaker protection feature.

Model REC-S520 ROBO*CUT™

6.6 Ton Battery Powered Cutter – .75" Jaw Opening

Specifications

Output	6.6 Ton
Weight	9.5 lbs. with Battery
Size	12" L x 12" H x 2.5" W
Jaw Opening	.75"

Cutting Estimates

	BP-70E
336 ACSR	75
1/2" Wire Rope	75
1/2" Rebar	50
1/2" Ground Rod	50
3/8" Guy Wire	35

Cutting Capacities

Wire Rope	5/8"
Rebar (Sc 40)	1/2"
Rebar (Sc 60)	3/8"
Ground Rod	1/2"
ACSR	477 MCM
Guy Wire	3/8"

Features

- Flip-Top Latching Head
- Tested Up to 75kV
- One Hand Operation
- Rotational Head
- Rapid Advance
- Ergonomically Balanced
- Ergonomic Pistol Grip Handle
- Weather Resistant Housing
- Overload Bypass Protection

Due to material composition, the ratings are to be used as a guide. Actual capacity may vary due to "bypass" feature.



The **REC-S520** was designed to cut the toughest steel used in construction today. It can replace an entire tool kit, including several sizes of conventional bolt cutters, hacksaws, acetylene torches and cable cutters. The REC-S520 was designed from the same hydraulic system as the REC-558U featuring a rapid advance ram for reduced cycle times.

With the pull of a trigger, you can cut ACSR cables up to 477, standard guy wires to 3/8", and ground rods to 1/2". The specially designed flip-top latch and rotating head provide exceptional ease of use and maneuverability in tight working quarters. The REC-S520 has an overload bypass that will "kick out" when the tool reaches 6.6 tons or is attempting to cut cables beyond its capacities.

NOTE: DO NOT CUT EHS GUY WIRE OR CASE HARDENED STEEL RODS. SEE REC-S524CC, S-24CC, SP-24CC, S-32CC OR SP-32CC1.

For additional ordering information, please refer to page 10.



Model REC-S524H ROBO*TMCUT

8 Ton Battery Powered Cutter – .95" Jaw Opening



The **REC-S524H** was designed to cut the toughest steel used in construction today. It can replace an entire tool kit, including several sizes of conventional bolt cutters, hacksaws, acetylene torches and cable cutters. The REC-S524 was designed from the same hydraulic system as the REC-558U featuring a rapid advance ram for reduced cycle times.

With the pull of the trigger, you can cut ACSR cables up to 477, standard guy wires to 5/8", and ground rods to 5/8". The specially designed flip-top latch and rotating head provide exceptional ease of use and maneuverability in tight working quarters. The REC-S524H has an overload bypass, which will "kick out" when tool reaches 8 tons or is attempting to cut materials beyond its capacities.

NOTE: DO NOT CUT EHS GUY WIRE OR CASE HARDENED STEEL RODS. SEE REC-S524CC, S-24CC, SP-24CC, S-32CC OR SP-32CC1.

For additional ordering information, please refer to page 10.

Specifications

Output	8 Ton
Weight	10 lbs. with Battery
Size	12.5" L x 12" H x 2.5" W
Jaw Opening	.95"

Cutting Estimates

	BP-70E
336 ACSR	75
1/2" Wire Rope	75
1/2" Rebar	50
1/2" Ground Rod	50
3/8" Guy Wire	35

Cutting Capacities

Wire Rope	7/8"
Rebar (Sc 40)	5/8"
Rebar (Sc 60)	1/2"
Ground Rod	5/8"
ACSR	477 MCM
Guy Wire	5/8"

Features

- Flip-Top Latching Head
- Tested Up to 75kV
- One Hand Operation
- Rotational Head
- Rapid Advance
- Ergonomically Balanced
- Ergonomic Pistol Grip Handle
- Weather Resistant Housing
- Overload Bypass Protection

Due to material composition, the ratings are to be used as a guide. Actual capacity may vary due to "bypass" feature.

Model REC-S524CC ROBO*CUT™

8 Ton Battery Powered Cutter – .95" Jaw Opening

Specifications

Output	8 Ton
Weight	10 lbs. with Battery
Size	12.5"L x 12"H x 2.5"W
Jaw Opening	.95"

Cutting Estimates

	BP-70E
477 ACSR	75
1/2" Rebar	50
1/2" Ground Rod	50
3/8" Guy Wire	35

Cutting Capacities

ACSR	477 MCM
Standard Guy Wire	5/8"
EHS Guy Wire	9/16"
Ground Rod	5/8"
Rebar (Sc 40)	5/8"

Features

- Flip-Top Latching Head
- Tested Up to 75kV
- One Hand Operation
- Rotational Head
- Rapid Advance
- Ergonomically Balanced
- Ergonomic Pistol Grip Handle
- Weather Resistant Housing
- Overload Bypass Protection

Due to material composition, the ratings are to be used as a guide. Actual capacity may vary due to "bypass" feature.



The **REC-S524CC** was designed to cut the toughest steel used in construction today. It can replace an entire tool kit, including several sizes of conventional bolt cutters, hacksaw, acetylene torches and cable cutters. The REC-S524CC was designed from the same hydraulic system as the REC-558U featuring a rapid advance ram for reduced cycle times.

The specially designed anvil style blades were made to cut EHS up to 9/16" and with the pull of the trigger, you can cut ACSR cables up to 477 MCM, standard guy wires to 5/8", and ground rods to 5/8". The specially designed flip-top latch and rotating head provide exceptional ease of use and maneuverability in tight working quarters. The REC-S524CC has an overload bypass, which will "kick out" when tool reaches 8 tons or is attempting to cut cables beyond its capacities.

For additional ordering information, please refer to page 10.



Model REC-S540 ROBO*CUT™

8 Ton Battery Powered Cutter – 1.6" Jaw Opening



The **REC-S540** is designed to cut up to 1590 ACSR and regular guy wires and ground rod up to 5/8". The REC-S540 is ideal for aerial bucket work and trench operations. It features a two stage, rapid advance ram for reduced cycle times.

This cutter is made for one-handed operation. Simply remove the pin latch, place over cable, reinsert pin, and cut. A built-in bypass will pop off if the material is beyond the cutter's capacity. It is not recommended to cut hardened steel.

NOTE: DO NOT CUT EHS GUY WIRE OR CASE HARDENED STEEL RODS. SEE REC-S524CC, S-24CC, SP-24CC, S-32CC OR SP-32CC1.

For additional ordering information, please refer to page 10.

Specifications

Output	8 Ton
Weight	14.6 lbs. with Battery
Size	17.5" L x 12.5" H x 2.5" W
Jaw Opening	1.6"

Cutting Estimates

	BP-70E
795 ACSR	50
3/4" Wire Rope	75
5/8" Rebar	50
5/8" Ground Rod	50
3/8" Guy Wire	35

Cutting Capacities

Wire Rope	3/4"
Rebar (Sc 40)	5/8"
Rebar (Sc 60)	5/8"
Ground Rod	5/8"
ACSR	1590 MCM
Guy Wire	5/8"
Cu/Al Cable	1.5"

Features

- Tested Up to 75kV
- One Hand Operation
- Rotational Head
- Rapid Advance
- Ergonomically Balanced
- Ergonomic Pistol Grip Handle
- Weather Resistant Housing
- Overload Bypass Protection

Due to material composition, the ratings are to be used as a guide. Actual capacity may vary due to "bypass" feature.

Model REC-S3550 ROBO*CUT™

13 Ton Battery Powered Cutter – 2" Jaw Opening

Specifications

Output	13 Ton
Weight	23 lbs. with Battery
Size	21.5"L x 10.5"H x 3.5"W
Jaw Opening	2"

Cutting Capacities

Wire Rope	1"
Soft Steel Bolts	1-1/4"
Rebar, Ground & Anchor Rod	3/4"
Cu & Al wire	2"
ACSR	2"
Standard Guy Wire	3/4"
Telephone & Lead Sheathed Cable	DO NOT CUT

Features

- Tested Up to 75kV
- Rotational Head
- Rapid Advance
- Ergonomically Balanced
- Weather Resistant Housing
- Overload Bypass Protection
- Most Powerful Battery Operated Cutter

Due to material composition, the ratings are to be used as a guide. Actual capacity may vary due to "bypass" feature.



The **REC-S3550** cuts ACSR, guy wire, wire rope, and ground rod. Powerful and portable with a 2" jaw opening. A latch-type jaw swings open to accept material to be cut. The head can be rotated for proper positioning of rod or cable. This is our most versatile cutter patterned after our S-55 hand operated cutter.

NOTE: WILL CUT ALL 795 ACSR CABLE, INCLUDING DRAKE.

For additional ordering information, please refer to page 10.



Model REC-P1 ROBO*PUMP

10,000 psi Battery Powered 28.8 Volt Pump



The Huskie **REC-P1** is a 28.8 volt, battery operated hydraulic pump that runs on two 14.4 Volt Huskie BP-70 series batteries. The REC-P1 is supplied with a push button remote control that allows the operator to advance, hold, and retract when needed. The user is never committed to a full cycle and can always back off at any time during the advance – even when the pump is under pressure. High pressure, non-conductive hose can be attached to a 360° moveable swivel port on the pump. This swivel port allows the user to position the hose to fit in confined aerial buckets and manholes.

Both batteries must be inserted in the pump to operate. It is recommended to operate the pump with a 10 foot hose, up to a maximum of 20 feet. A longer hose will cause cycle times to increase.

We recommend you specify the Huskie SC-Series flush face dripless couplers, as not to deplete the oil in the reservoir when changing heads.

For additional ordering information, please refer to page 10.

Specifications

Output	10,000 psi
Weight	23 lbs. with 2 Batteries
Size	16"L x 6"H x 10"D
Jaw Opening	1.5"

Crimping Estimates

	2 BP-70E
Using a 10 ft. Hose and EP-60W on 1272 ACSR	10
No Load Cycle Time	Advance 25 Sec., Retract 30 Sec.

Optional Accessories

FS-14	Foot Switch, p. 86
URH-14	Remote Handle, p. 86
REC-P1CASE	Steel Carrying Case, p. 92

Features

- Powerful 28.8 Volt
- Operate Up to Single Acting 60 Ton Press
- Adjustable 10,000 psi
- Eliminates the Need for AC Power
- Compact and Portable

ECO-LINE

Quality Tools at an Affordable Price



Huskie Ambassador
Al Withers, Lineman
Company: BC Hydro
British Columbia, Canada

Al holds the ECO-EZ.



ECO-EZ
P. 39



ECO-EZ558
P. 40



ECO-258
P. 41



ECO-ND
P. 42



ECO-630
P. 43



ECO-750
P. 44

All for One, One for All

One Huskie 14.4 Volt
Battery allows you to
operate all of our ROBO
Battery Powered Cutting
and Crimping tools.



Model ECO-EZ ROBO*CRIMP™

6 Ton Battery Powered Streamline Compression Tool

Accepts "W", "O" and "X" Type Dies

- See Page 60 for Available Huskie Dies
- Die compatibility varies by jaw.



EZND

D3 Nest Die (no nose die) Snub Nose. Accepts "W" Style Dies.



EZK

Takes Kearney "O" Type Dies. Does NOT Accept "W" Style Dies.



EZO

D3 Nest Die with "O" Nose built-in. Accepts "W" Style Dies.



EZBG

D3 Nest Die with "BG" Nose built-in. Accepts "W" Style Dies.

Specifications

Output	6 Ton
Weight	6.75 lbs. with Battery
Length	20.5"

Crimping Estimates

	BP-70E
4/0-4/0 H-Tap	80

Connector Range

Lugs and Splices	#8-500 MCM Cu #8-300 MCM Al
H-Taps	Up to 4/0-4/0

Optional Accessories

ND-JAWN, O-JAWN, and BG-JAWN	Brush Contact Insulated Jaw
HT58CUT	Cutter Dies, p. 60

Features

- One Hand Operation
- Rotational Head
- Visible Orange Housing
- Weather Resistant Housing
- Audible Bypass when Predetermined Pressure is Achieved
- Economically Priced
- Four Compression Heads to Choose From
- Streamlined
- Lightweight
- Compatible With All Huskie 14.4V Batteries

The **ECO-EZ** Streamline compression tool has a powerful 6 ton output. When ordering, choose from any of the four available heads that meet your needs. The swivel head design allows the jaws to rotate more than 180° for operator convenience.

No need for another battery system. This tool operates on the same 14.4 volt battery used in all of the Huskie Robo tools. Just like the rest of our battery tools, energized lines will not affect the operation or performance of the tool. The new ECO-EZ Streamline tool carries a 3 year warranty on the tool and a 5 year warranty on the batteries.

For additional ordering information, please refer to page 10.



EZ-HLSTR
(optional)
p. 91

Model ECO-EZ558 ROBO*CRIMP™

6 Ton Battery Powered Compression Tool – 1.8" Jaw Opening

Accepts "W", "O" and "X"
Type Dies

- See Page 60 for
Available Huskie Dies

Specifications

Output	6 Ton
Weight	7 lbs. with Battery
Length	18.5"
Jaw Opening	1.8"

Crimping Estimates

	BP-70E
#6 Cu/Al	210
1/0 Cu/Al	160
4/0 Cu/Al	125

Connector Range

Lugs and Splices	#8-500 MCM Cu #8-300 MCM Al
H-Taps	Up to 4/0-4/0

Optional Accessories

25CAT	Cutter Head, p. 91
HT58CUT	Cutter Dies, p. 60
ROB-358N	Insulated Head

Features

- One Hand Operation
- Rotational Head
- Visible Orange Housing
- Weather Resistant Housing
- Audible Bypass when Predetermined Pressure is Achieved
- Economically Priced
- Streamlined
- Lightweight



25CAT
(optional)
p. 91

EZ-HLSTR
(optional)
p. 91



The **ECO-EZ558** is a 6 ton streamline battery powered compression tool designed to squeeze commonly used service entrance connectors, lugs, sleeves, H and C-taps. It can be easily carried and used in limited access areas because of its swivel head and compact design. Its six ton output is equal to any comparable hand-held, hydraulic, compression tool and far exceeds any mechanical crimper.

A built-in, factory pre-set 6 Ton by-pass cartridge assures a complete compression every time. The ECO-EZ558 accepts all "W", "O" or "X" type dies and "D3" nest dies come standard in the tool.

For additional ordering information, please refer to page 10.



Model ECO-258 ROBO*CRIMP™

6 Ton Battery Powered Compression Tool – 1.8" Jaw Opening



Accepts "W", "O" and "X" Type Dies

• See Page 60 for Available Huskie Dies

Specifications

Output	6 Ton
Weight	8 lbs. with Battery
Size	13"L x 12"H x 3"W
Jaw Opening	1.8"

Crimping Estimates

	BP-70E
#6 Cu/Al	210
1/0 Cu/Al	160
4/0 Cu/Al	125

Connector Range

Lugs and Splices	#8-500 MCM Cu #8-300 MCM Al
H-Taps	Up to 4/0-4/0

Optional Accessories

HT58CUT	Cutter Dies, p. 60
ROB-358N	Insulated Head

Features

- One Hand Operation
- Rotational Head
- Visible Orange Housing
- Ergonomic Pistol Grip Handle
- Weather Resistant Housing
- Audible Bypass when Predetermined Pressure is Achieved
- Economically Priced

The **ECO-258** is a 6 ton battery powered compression tool designed to squeeze commonly used service entrance connectors, lugs, sleeves, H and C-taps. It can be easily carried and used in limited access areas because of its swivel head and compact design. Its six ton output is equal to any comparable hand-held, hydraulic, compression tool and far exceeds any mechanical crimper.

A built-in, factory pre-set 6 Ton bypass cartridge assures a complete compression every time. The ECO-258 accepts all "W" type or "O" type dies and "D3" nest dies come standard in the tool.

For additional ordering information, please refer to page 10.

Model ECO-ND ROBO*CRIMP™

6 Ton Battery Powered Compression Tool – 1.4" Jaw Opening

Accepts "W", "O" and "X" Type Dies

• See Page 60 for Available Huskie Dies
Die compatibility varies by jaw.

Specifications

Output	6 Ton
Weight	8 lbs. with Battery
Size	14"L x 13"H x 2.25"W
Jaw Opening	1.4"

Crimping Estimates

	BP-70E
#6 Cu/Al	210
1/0 Cu/Al	160
4/0 Cu/Al	125

Connector Range

Lugs and Splices	#8-500 MCM Cu #8-300 MCM Al
H-Taps	Up to 4/0-4/0

Optional Accessories

ND-JAWN, O-JAWN, and BG-JAWN	Brush Contact Insulated Jaw
HT58CUT	Cutter Dies, p. 60

Features

- One Hand Operation
- Rotational Head
- Visible Orange Housing
- Ergonomic Pistol Grip Handle
- Weather Resistant Housing
- Audible Bypass when Predetermined Pressure is Achieved
- Economically Priced



ND

D3 Nest Die (no nose die) Snub Nose. Accepts "W" Style Dies.



NDK

Takes Kearney "O" Type Dies. Does NOT Accept "W" Style Dies.



NDO

D3 Nest Die with "O" Nose built-in. Accepts "W" Style Dies.



NDBG

D3 Nest Die with "BG" Nose built-in. Accepts "W" Style Dies.

The battery-driven open jaw **ECO-ND** compression tool has a powerful 6 ton output which will crimp the full range of W-type connectors. The snub-nose single groove jaw has a D3 nest die and will accept all "W", "O" and "X" type dies (except the NDK). The snub-nose design is physically smaller than the jaws used on our wooden handled tools, which is ideal for tight quarters. The swivel head design allows the jaws to rotate more than 350° for operator convenience.

No need for another battery system. This tool operates on the same 14.4 volt battery used in all of the Huskie Robo tools. Just like the rest of our battery tools, energized lines will not affect the operation or performance of the tool.

For additional ordering information, please refer to page 10.



Model ECO-630 ROBO*CRIMP™

6.2 Ton Battery Powered Dieless Crimping Tool – .9" Jaw Opening



Specifications

Output	6.2 Ton
Weight	11.5 lbs. with Battery
Size	14"L x 13"H x 2.5"W
Jaw Opening	.9"
Center Opening	1.25"

Crimping Estimates

	BP-70E
1/0 Cu/Al	75
750 MCM	90

Connector Range

Lugs and Splices	#10 AWG-500 MCM
------------------	-----------------

Features

- One Hand Operation
- Rotational Head
- Visible Orange Housing
- Ergonomic Pistol Grip Handle
- Weather Resistant Housing
- Audible Bypass when Predetermined Pressure is Achieved
- Economically Priced
- Eliminates the Need for Dies
- Designed to crimp Anderson connectors & other brand connectors manufactured to ANSI C119.4

The **ECO-630** is a battery operated, dieless compression tool used to compress Anderson style lugs. 6.2 tons of compression force is achieved when the tool advances and bypasses at the predetermined pressure. Advance and retract buttons on the tool handle allow for one hand operation, freeing the other hand to maneuver the cable.

NOTE: The ECO-630 is designed to crimp Anderson Style connectors. Other brand connectors manufactured to ANSI specifications C119.4 can be used. For range-taking connectors, the cable must be maximum size specified for the connector. Consult your connector manufacturer for dieless applications.

For additional ordering information, please refer to page 10.

Model ECO-750 ROBO*CRIMP™

6.2 Ton Battery Powered Flip-Top Dieless Crimping Tool – 1.5" Jaw Opening

Specifications

Output	6.2 Ton
Weight	12 lbs. with Battery
Size	14"L x 13"H x 2.5"W
Jaw Opening	1.5"
Center Opening	1.5"

Crimping Estimates

	BP-70E
1/0 Cu/Al	75
750 MCM	90

Connector Range

Lugs and Splices	#10 AWG-750 MCM
------------------	-----------------

Features

- One Hand Operation
- Rotational Head
- Visible Orange Housing
- Ergonomic Pistol Grip Handle
- Weather Resistant Housing
- Audible Bypass when Predetermined Pressure is Achieved
- Economically Priced
- Eliminates the Need for Dies
- Designed to crimp Anderson connectors & other brand connectors manufactured to ANSI C119.4



The **ECO-750** is a flip-top, dieless tool designed to crimp cables up to 750 MCM. The flip top latch opens to allow for easy cable positioning and removal. The dieless system is used for non-tension splices and terminations. There is one stationary and three movable indenting nibs which close at 90° angles to each other so that the connector is squeezed equally at four strategic points with 6.2 tons of force. The top can be unlatched to accommodate larger size lugs and cables up to 750 MCM. Typical applications include in-line splicing and lug terminations.

NOTE: The ECO-750 is designed to crimp Anderson Style connectors. Other brand connectors manufactured to ANSI specifications C119.4 can be used. For range taking connectors, the cable must be maximum size specified for the connector. Consult your connector manufacturer for dieless applications.

For additional ordering information, please refer to page 10.



Batteries

High Capacity Replacement Batteries



BP-70E



BP-70EI

The **BP-70E** is the standard replacement battery for all ROBO tools. It is a high capacity 1.9 Ah Ni-Cd battery with a life expectancy of 1000 recharges. This battery replaces the original BP-70R and offers 30% more cycles per charge. Actual cycles per charge will vary depending on the type and size of the material being cut or compressed.

The **BP-70EI** "Smart" battery is the same as the standard BP-70E with the addition of a LED display that will indicate its power capabilities for you. The BP-70EI is self evaluating which allows the user to monitor the status of the battery's total life and power in between charges. Charge time is approximately 25 minutes for a fully depleted battery. Both 14.4 volt batteries are interchangeable with all Huskie ROBO products.

The battery's capacity is shown with a LED indicator of five red lights on its side. Different light patterns shown in the instruction manual, will give the user specific battery information. For instance, when the bottom red light begins to flash, it is a warning that only 10% of the battery power remains and it must be recharged soon. You'll know that the battery is fully charged if you push the "check" button and all five lights turn on. To check battery recharge cycles, depress "check" button once, release, and depress again while LED lights are on, and hold approximately 10 seconds until LED pattern is displayed. The LED Indicator on the BP-70EI battery carries a 1 year warranty from purchase date.

NOTE: ROBO batteries are extremely powerful and care should be taken to avoid shorting out the terminals. All LED lights will flash if the battery has internal problems. If this occurs, the battery must be returned to the factory for evaluation.

Features

- Up to 1000 Recharge Cycles
- High Capacity 1.9 Ah
- LED Indicator (BP-70EI Only)
- 14.4 Volt
- 5 Year Warranty (LED= 1 Year Warranty)



BP-70MH

The **BP-70MH** is a nickel metal hydride battery that has an ultra high capacity of 2.9 Ah, 30% greater run time than the BP-70E. It is distinguished by the blue rim on the top cap. Charge time is approximately 35 minutes on a fully depleted battery.

Features

- Up to 1000 Recharge Cycles
- High Capacity 2.9Ah Battery
- 14.4 Volt
- 5 Year Warranty

Model CH-35R

Standard 25 Minute Quick Charger

Features

- 25 Minute Recharge on High Capacity BP-70E and BP-70EI Batteries
- Reconditioning Cycle



The **CH-35R** is the newest addition to the ROBO lineup of battery chargers. It is designed to charge the new high capacity BP-70E and BP-70EI batteries in 25 minutes. It will also charge the BP-70R and BP-70I batteries in just 15 minutes and the BP-70MH in 35 minutes and has a reconditioning cycle.

The CH-35R charger has an optional refresh cycle built in to discharge then recharge the battery, to eliminate "memory" effect and return the battery to its optimal performance. This cycle could take a maximum time of 10 hours to complete on a fully charged battery, but considerably less on a partially discharged battery. This cycle can be used anytime the operator feels the battery is losing performance or the number of cycles per charge is decreasing.

MODEL CH-70DCH

12 Volt DC Charger

Features

- Automotive Style Plug End
- 90 Minute Recharge on High Capacity BP-70E and BP-70EI Batteries



The **CH-70DCH** is a 12 volt DC charger with charge times of 1 hour for the BP-70R and BP-70I, 90 minutes for the BP-70E and BP-70EI and 2 hours for the BP-70MH. It can be plugged directly into an automotive cigarette lighter and has a built in overload fuse protector.

Although the charger is composed of a lightweight printed circuit, the battery drain on an automotive system is considerable and the engine should be running while the battery is being charged. We do not recommend battery charging while the engine is off. The battery should be secure while the vehicle is in motion to avoid it from bouncing out of the charger.





HYDRAULIC COMPRESSION TOOLS

Hydraulic Compression Tools



Huskie Ambassador
Neal Walker, Distribution
Line Technician
Company: Duke Energy
Shelby, North Carolina

Neal holds the EP-510C.

Hydraulic Compression Pgs. 49-52



Remote Compression Heads Pgs. 52-56

EP-60W P. 57



EP-60D P. 58



EP-100WB P. 59



Compression Dies Pgs. 60-65



Die Cases P. 65



Gauges P. 66



Model CN-258

6 Ton Compression Tool with Rubber Boot – .95" Jaw Opening



Huskie's **CN-258** is used for service entrance connections up to 4/0, and its bypass cartridge assures all compressions. A two-stage, rapid advance pumping system and threaded collar save compression strokes and time.

The nest dies are D-3, and can be changed with other Kearney "O" type dies. If you wish to use Burndy "W" type dies, simply slip the "W" type over the D-3 nest die and snap them into the locked position. Huskie carries a wide range of market equivalent dies. Pressure can be checked with Huskie's PG-15 pressure gauge. The tool comes complete with a carrying case.

Accepts "W", "O" and "X" Type Dies

- See Page 60 for Available Huskie Dies

Specifications

Output	6 Ton
Weight	8.5 lbs.
Length	21"
Jaw Opening	.95"

Connector Range

Lugs	#6-500 MCM Cu
Splices	#6-300 MCM Al
H-Taps	4/0-4/0

Optional Accessory

HT58CUT	Cutter Die, p. 60
---------	-------------------

Features

- Two-Stage Rapid Advance
- External Pressure Adjustment

Model EP-630A

6.2 Ton Dieless Crimping Tool



The **EP-630A** is commonly used by electric utilities and contractors who prefer dieless compression to circumferential compression.

The operator simply positions a connector in the jaws and pumps until the tool bypasses at 6.2 tons of output. Three moveable nibs crimp the connector against a fourth stationary nib. A carrying case is included.

NOTE: The EP-630A was designed to crimp Anderson style connectors, and other brand connectors manufactured to ansi C119.4.

Specifications

Output	6.2 Ton
Weight	11.5 lbs.
Length	22"
Jaw Opening	.9"
Center Opening	1.25"

Connector Range

#10 AWG-500 MCM

Features

- Two-Stage Rapid Advance
- External Pressure Adjustment

Model EP-750A

6.2 Ton Flip-Top Dieless Crimping Tool

Specifications

Output	6.2 Ton
Weight	11.5 lbs.
Length	23"
Jaw Opening	1.5"

Connector Range

#10 AWG-750 MCM

Features

- Designed to Crimp Anderson Connectors & Other Brand Mfg. to ANSI C119.4
- Rapid Advance
- Flip-Top Head Design
- Eliminates the Need for Dies



The **EP-750A** operates the same as the EP-630A, but has a larger connector/cable capacity. Larger cables can be inserted and easily removed by opening the flip-top head. A carrying case is included.

NOTE: The EP-750A was designed to crimp Anderson style connectors, and other brand connectors manufactured to ANSI c119.4.

Model EP-410

12 Ton Compression Tool with Rubber Boot – 1" Jaw Opening

Accepts "U" Type Dies

- See Page 61 for Available Huskie Dies

Specifications

Output	12 Ton
Weight	13 lbs.
Length	23"
Jaw Opening	1"

Connector Range

Lugs	#8-750 MCM Cu
Splices	#10-400 MCM Cu

Features

- Protective Rubber Boot on "C" Head
- External Pressure Adjustment



The **EP-410**, hand operated, compression tool features a two stage rapid advance pumping system. It accepts all U-type dies currently manufactured for 12 ton tools on the market.

Consult your connector manufacturer for exact cable, connector, and die combinations. Huskie stocks a variety of dies, simply specify the manufacturer's die and connector numbers when contacting your dealers. A carrying case is included.



Model EP-430

12 Ton Compression Tool with Rubber Boot – 1-3/16" Jaw Opening



Accepts "U" Type Dies

- See Page 61 for Available Huskie Dies

Specifications

Output	12 Ton
Weight	13.5 lbs.
Length	24"
Jaw Opening	1-3/16"

Connector Range

Lugs	Up to 750 MCM Cu
Splices	Up to 600 MCM Cu

Features

- Protective Rubber Boot on "C" Head
- External Pressure Adjustment

The **EP-430** is unique in that it has a large jaw opening of 1-3/16" and is able to splice up to 600 MCM. This tool was designed for the electrical contractor or electric utility lineman who is confronted with larger cable diameters and larger connectors. Similar competitive tools are limited to a .95" jaw opening that drastically reduces their connecting range. Most internal hydraulic components are the same as the EP-410 and EP-510. A carrying case is included.

Model EP-510C

12 Ton Compression Tool with Rubber Boot – 1.65" Jaw Opening



Accepts "U" Type Dies

- See Page 61 for Available Huskie Dies

Specifications

Output	12 Ton
Weight	16.5 lbs.
Length	25"
Jaw Opening	1.65"

Connector Range

Lugs and Splices	Up to 750 MCM Al and Cu
------------------	----------------------------

Features

- Protective Rubber Boot on "C" Head
- External Pressure Adjustment
- UL Classified

Huskie's **EP-510C** was engineered to accommodate all U-type dies currently used in existing 12 ton tools. It is one of Huskie's most versatile tools since it takes a full range of connectors and lugs to 750 MCM. The jaw opening is 1.65" to accept larger splices up to 750 MCM. A carrying case is included. The EP-510C output tonnage is adjustable to 14 tons for some specific grounding applications.

Model EP-510K

12 Ton Compression Tool with Rubber Boot – 1.5" Jaw Opening

Accepts "WH-2" and
"WH-3" Type Dies
• See Page 62 for
Available Huskie Dies

Specifications

Output	12 Ton
Weight	17 lbs.
Length	26"
Jaw Opening	1.5"

Connector Range

Lugs	Up to 1033 MCM Strand
Splices	477 ACSR

Order Data

EP-510K	Compression Tool
PG-4K	Test Gauge with TDK Dies

Optional Accessory

UDK-1	"U" Die Adapter, p. 92
-------	------------------------

Features

- Protective Rubber Boot on "C" Head
- External Pressure Adjustment



The Huskie **EP-510K** was designed to accept Kearney dies commonly used in their models WH-2, PH-2, and WH-3 hydraulic tools. It features our exclusive replaceable bypass cartridge to facilitate shop repairs and eliminate costly down time. A carrying case is included.

NOTE: Tool output tonnage can be determined by using our model PG-4 pressure gauge with model TDK-1.

Model CN-58H

6 Ton Remote Compression C-Head with Rubber Boot– .95" Jaw Opening

Accepts "W", "O" and "X"
Type Dies
• See Page 60 for
Available Huskie Dies

Specifications

Output	6 Ton
Weight	6 lbs.
Length	12"
Jaw Opening	.95"

Connector Range

Lugs	#6-500 MCM Cu
Splices	#6-4/0 Al
H-Taps	4/0-4/0 Al

Features

- 3/8" Male Screw Type Coupler Provided
- Protective Rubber Boot on "C" Head



The **CN-58H** remote operated "C" head requires an external pumping source of 10,000 psi. It accepts Kearney "O" type and Burndy "W" type dies. It is a service entrance compression tool and the smallest of our compression tool line. The head is lightweight for easy handling in hot stick applications.

The tool is supplied with a 3/8" male screw type coupler and a carrying case.

NOTE: When using any of these high-pressure tools, always use 10,000 psi rated non-conductive hose (NC-16 series).



Model EP-630HA

6.2 Ton Dieless Remote Crimping Head with Rubber Boot – .9" Jaw Opening



The **EP-630HA** is a dieless remote head that requires an external 10,000 psi pumping source. It is designed to crimp Anderson connectors #10 str - 500 MCM bare Al and #10 sol - 500 MCM bare Cu. The EP-630HA is mostly used by electrical contractors who prefer dieless compression to circumferential compression.

This tool is supplied with a 3/8" male, screw type coupler and carrying case.

NOTE: THE EP-630HA WAS DESIGNED TO CRIMP ANDERSON STYLE CONNECTORS, AND OTHER BRAND CONNECTORS MANUFACTURED TO ANSI C119.4.

Specifications

Output	6.2 Ton
Weight	6.5 lbs.
Length	10" with Coupler
Jaw Opening	.9"
Width	4.5"
Center Opening	1.25"

Connector Range

#10 AWG-500 MCM Cu/Al

Features

- Designed to Crimp Anderson Connectors & Other Brand Mfg. to ANSI C119.4
- Eliminates the Need for Dies
- Protective Rubber Boot on "C" Head

Model EP-750HA

6.2 Ton Flip-Top Dieless Remote Crimping Head – 1.5" Jaw Opening



The Huskie **EP-750HA** dieless, Anderson style head has a flip-top opening and a pull-pin locking mechanism to accept larger connectors up to 750 MCM. Output force is 6.2 tons, and 10,000 psi external pumping source is required. The EP-750HA is supplied with a 3/8" male, screw type coupler and a carrying case.

NOTE: THE EP-750HA WAS DESIGNED TO CRIMP ANDERSON STYLE CONNECTORS, AND OTHER BRAND CONNECTORS MANUFACTURED TO ANSI C119.4.

Specifications

Output	6.2 Ton
Weight	6.5 lbs.
Length	10.5" with Coupler
Width	5.5"
Jaw Opening	1.5"

Connector Range

#10 AWG-750 MCM Cu/Al

Features

- Designed to Crimp Anderson Connectors & Other Brand Mfg. to ANSI C119.4
- Flip-Top Head Design
- Eliminates the Need for Dies

Model EP-410H

12 Ton Remote Compression C-Head with Rubber Boot – 1" Jaw Opening

Accepts "U" Type Dies

- See Page 61 for Available Huskie Dies

Specifications

Output	12 Ton
Weight	8-1/4 lbs.
Length	10"
Jaw Opening	1"

Connector Range

Lugs	#8-750 MCM Cu
Splices	#10-400 MCM Cu

Feature

- Protective Rubber Boot on "C" Head



The **EP-410H** is a traditional C-head with a one-inch jaw opening. It will accept all "U" type dies currently used in 12 ton tools on today's market.

A 10,000 psi external pump is required to operate the C-head. The output pressure is 12 tons when the pump is set at 10,000 psi. After a compression is made on a lug or sleeve, an internal ram spring retracts the jaw when the pump pressure is relieved. The tool is supplied with a standard 3/8" male, screw type coupler but can be fitted with an opposite female coupler if requested. Carrying case included.

NOTE: When using any of these high-pressure tools, always use 10,000 psi rated non-conductive hose (NC-16 series).

Model EP-410HT

12 Ton Remote Titanium Compression C-Head – 1" Jaw Opening

Accepts "U" Type Dies

- See Page 61 for Available Huskie Dies

Specifications

Output	12 Ton
Weight	5 lbs.
Length	10"
Jaw Opening	1"

Connector Range

Lugs	#8-750 MCM Cu
Splices	#10-400 MCM Cu

Optional Accessories

HTADPT	Hot Stick Adapter
--------	-------------------

Features

- Extremely Lightweight Titanium
- Ideal for Hot Stick Applications
- All the Same Features as the EP-410H Model



The unique, lightweight titanium head of the **EP-410HT** reduces its weight to just five pounds. This is an ideal weight for Hot Stick handling since it is easy to lift and effortless to control while making connections. Though more expensive than conventional 12 ton tools, operator preference and performance when handling this tool will save time and investment over the life of the product. The tool is supplied with a standard 3/8" male, screw type coupler but can be fitted with an opposite female coupler if requested. A carrying case is included.

NOTE: When using any of these high-pressure tools, always use 10,000 psi rated non-conductive hose (NC-16 series).



Model EP-430H

12 Ton Remote Compression C-Head with Rubber Boot – 1-3/16" Jaw Opening



Accepts "U" Type Dies

- See Page 61 for Available Huskie Dies

Specifications

Output	12 Ton
Weight	10 lbs.
Length	11"
Jaw Opening	1-3/16"

Connector Range

Lugs	Up to 750 MCM Cu
Splices	Up to 600 MCM Cu

Feature

- Protective Rubber Boot on "C" Head

The **EP-430H** is a remote C-head that requires an external 10,000 psi pumping source for operation. This unit has a larger jaw opening than our EP-410H. The 1-3/16" opening allows the user to compress larger splices up to 600 MCM. The EP-430H is a single-acting, spring return tool. Its trim design allows for easy handling in field applications. This unit is supplied with a 3/8" male, screw type coupler, metal carrying case and die tray. We recommend the use of our non-conductive, high pressure hose.

The EP-430H accepts "U" type dies designed to fit all 12 ton tools. Unique features include a knurled handle shank, a pull die release button on top of the C-head, and a push button die release on the opposite jaw.

Model EP-510HC

12 Ton Remote Compression C-Head with Rubber Boot – 1.65" Jaw Opening



Accepts "U" Type Dies

- See Page 61 for Available Huskie Dies

Specifications

Output	12 Ton
Weight	11 lbs.
Length	12-1/4"
Jaw Opening	1.65"

Connector Range

Lugs	750 MCM Cu
Splices	750 MCM Cu

Feature

- Protective Rubber Boot on "C" Head

The **EP-510HC** is a remote C-head that requires an external 10,000 psi pumping source. It accepts all "U" type dies used with conventional 12 ton compression tools. The larger jaw opening of 1.65" accepts conductors and mid-span sleeve connections up to 750 MCM. The EP-510HC is supplied with a screw type, 3/8" male coupler, metal carrying case, and die tray. We recommend the use of our non-conductive high pressure hose.

NOTE: When using any of these high-pressure tools, always use 10,000 psi rated non-conductive hose (NC-16 series).

Model EP-510HK

12 Ton Remote Compression C-Head with Rubber Boot – 1.5" Jaw Opening

Accepts "WH-2" and
"WH-3" Type Dies
• See Page 62 for
Available Huskie Dies

Specifications

Output	12 Ton
Weight	13.5 lbs.
Length	14"
Jaw Opening	1.5"

Connector Range

Lugs	Up to 1033 MCM Stranded
Splices	477 ACSR

Optional Accessory

UDK-1	"U" Die Adapter, p. 92
-------	------------------------

Feature

- Protective Rubber Boot on "C" Head



The **EP-510HK** is a Kearney style tool which accepts PH-2, WH-2, and WH-3 style dies.

It has 12 tons of output and is used for crimping up to 750 MCM lugs or splices. An external 10,000 psi pumping source is needed to develop 12 tons of compression force. The EP-510HK comes complete with a 3/8" male, screw type coupler and carrying case.

NOTE: When using any of these high-pressure tools, always use 10,000 psi rated non-conductive hose (NC-16 series).

Model EP-610H

15 Ton Remote Compression C-Head – 2" Jaw Opening

Accepts "P" Type Dies
• See Page 62 for
Available Huskie Dies

Specifications

Output	15 Ton
Weight	14.5 lbs.
Length	14.5"
Jaw Opening	2" (1.5" with "U" Die Adapter)

Connector Range

Aluminum	#8 AWG-1250 MCM
Copper	\$8 AWG-1500 MCM

Optional Accessories

PU-15	"U" Die Adapter, p. 92
-------	------------------------

Feature

- Also Available for T&B Style 15 Ton Dies (Model EP-610TB)



The **EP-610H** is a remote C-head that requires an external 10,000 psi pumping source. It accepts all Huskie HT61 series and Burndy "P" type dies used in the Y-46. When used with a Huskie PU-15 die adapter it will accept all "U" type dies used with any 12 ton tool. This tool is primarily used for cables above 750 MCM or in cases where additional tonnage is required to compress larger lugs, terminals and sleeves on tension connections. It is most always used on larger underground cables up to 1000 MCM. The EP-610H is supplied with a 3/8" male, screw type coupler and carrying case.

NOTE: When using any of these high-pressure tools, always use 10,000 psi rated non-conductive hose (NC-16 series).



Model EP-60W (Steel), EP-60WT (Titanium)

60 Ton Compression Head



Accepts "HA60-SERIES"
Type Dies

- See Page 63 for
Available Huskie Dies

Specifications

Output	60 Ton
Weight	45 lbs. (Steel) 33 lbs. (Titanium)
Size	6"W x 17"H
Cable Capacity	2.4" O.D.
Die Style	HA60-Series
Ram Stroke	1.5" Travel
Oil Volume	312 cc

Connector Range

Lugs	Up to 2000 MCM Cu/Al
Splices	Up to 2500 MCM Cu/Al

Order Data

EP-60W	60 Ton Single Acting Compression Head
EP-60WT	Titanium Model

Features

- Designed for ACSR & ACAR Transmission and Distribution Cable
- Lightest 60 Ton Presses in the Industry
- Ultra Light Titanium Model Available
- Extremely Portable

The **EP-60W** is a single acting, 60 ton press that is designed to compress sleeves and lugs on ACSR and ACAR transmission and distribution cables. They are also ideal for substation construction and are operable from any 10,000 psi pumping source with proper oil capacity. These tools are made to be portable for easy maneuverability, unlike other brands.

The EP-60W series will readily accept any shell type dies currently used with Alcoa or Burndy 60 ton presses. Dies not listed can be made to specification; consult Huskie for more information.

Huskie also offers the lightest 60 ton presses in the industry. The EP-60W series is also offered in titanium. Titanium has the strength of steel but weighs nearly 30 percent less. Due to its lighter weight and the tool's portable design, the chance of back and muscle strain is greatly reduced. The titanium 60 ton press is easily maneuvered where heavy steel presses are almost impossible to operate, making it an ideal tool for jobs such as helicopter line installations.

NOTE: When using any of these high-pressure tools, always use 10,000 psi rated non-conductive hose (NC-16 series).



Model EP-60D (Steel), EP-60DT (Titanium)

60 Ton Double Acting Compression Head

Accepts "HA60-SERIES"
Type Dies

- See Page 63 for
Available Huskie Dies

Specifications

Output	60 Ton
Weight	47 lbs. (Steel) 34 lbs. (Titanium)
Size	6"W x 17"H
Cable Capacity	2.4" O.D.
Die style	HA60-Series
Ram Stroke	1.5" Travel
Oil Volume	303 cc

Connector Range

Lugs	Up to 2000 MCM Cu/Al
Splices	Up to 2500 MCM Cu/Al

Order Data

EP-60D	60 Ton Double Acting Compression Head
EP-60DT	Titanium Model

Features

- Designed for ACSR & ACAR Transmission and Distribution Cable
- Double Acting Hydraulic Cylinder for Quicker Return Times
- Ultra Light Titanium Model Available
- Extremely Portable



The **EP-60D** series is a double acting model. Double acting tools will eliminate the possibility of the tool jamming. Double acting means hydraulically advancing the ram to build the proper tonnage, then the hydraulic pressure is reversed to retract the ram. This will ensure the ram to retract without having to pry the jaws apart to release them and it will also retract much faster than single acting spring release tools.

Titanium has the strength of steel but weighs nearly 30% less. Due to its lighter weight and the tool's portable design, the chance of back and muscle strain is greatly reduced. The titanium 60 ton press is easily maneuvered where heavy steel presses are almost impossible to operate making it an ideal tool for jobs such as helicopter line installations.

NOTE: When using any of these high-pressure tools, always use 10,000 psi rated non-conductive hose (NC-16 series).



Model EP-100WB, EP-200WA

100 Ton & 200 Ton Compression Heads



EP-100WB Accepts "HA100-SERIES" Type Dies

- See Page 63 for Available Huskie Dies

Specifications EP-100WB

Output	100 Ton
Weight	96 lbs.
Size	7-1/2"W x 14"H
Die Style	HA100-Series
Ram Stroke	.98" Travel
Oil Volume	314 cc

Specifications EP-200WA

Output	200 Ton
Weight	190 lbs.
Size	14"W x 17"H
Die Style	HA200-Series
Ram Stroke	1.57" Travel
Oil Volume	1134 cc

Features

- Designed for Full Tension Transmission and Substation Connections
- Double Acting Hydraulic Cylinder for Quicker Return Times
- Lightest Weight Models in Their Class
- Removable Die Caps for Easy Cable Insertion

The **EP-100WB** and **EP-200WA** are 100 and 200 ton compression heads for full tension, transmission and substation connections and require an external 10,000 psi pumping source.

The EP-100WB will accept shell type dies currently used with Alcoa 100 ton compression heads. Dies for 200 ton presses are considered special application and must be engineered to the connector manufacturers specifications. Consult factory for these dies. Both compression heads are double acting and designed to operate from Huskie pump models R14EAD, HPG-4 or any 3/4 HP high-pressure, double acting pump with the proper oil capacity.

Double acting means hydraulically advancing the ram to build proper tonnage, then the hydraulic pressure is reversed to retract the ram. This will eliminate all possibilities of the connector hanging up or the tool jamming. The EP-200WA is the only 200 ton press on the market today and both are the lightest weight models in their class. Both models have removable die caps for easy connector positioning and 3/8" screw-type couplers.

NOTE: When using any of these high-pressure tools, always use 10,000 psi rated non-conductive hose (NC-16 series).

Model HT58-SERIES

Equivalent to Burndy "W" Type Dies for 4-6 Ton Tools

Features

- Fits All Existing Tools Accepting "W" Type Dies
- Marked with Huskie and Equivalent Burndy "W" Die Number
- Nickel Plated

*Available Mid-2009

HUSKIE	BURNDY	HUSKIE	BURNDY
HT58AE	W-K840	HT58DE	W-236
HT58BX	W-161	HT58DG	W-238
HT58BZ	W-162	HT58DH	W-239
HT58CB	W-163	HT58DK	W-241
HT58CD	W-164	HT58DM	W-243
HT58CE	W-165	HT58DP	W-245
HT58CF	W-166	HT58DT	W-247
HT58CG	W-167	HT58DV	W-248
HT58CM	W-171	HT58DW	W-249
HT58G	W-BG	HT58DZ*	W-251*
HT58J	W-C	HT58KA	W-687
HT58AK	W-O	HT58KH	W-702
HT58CUT	CUTTER	HT58AF	W-L

HUSKIE*	BURNDY*
HT58AW	W-2CRT
HT58AU	W-4CRT
HT58AT	W-5CRT
HT58AY	W-25RT
HT58AZ	W-26RT
HT58BA	W-27RT
HT58BC	W-28RT
HT58BE	W-29RT
HT58BF	W-30RT
HT58BJ	W-31RT
HT58BK	W-32RT
HT58BL	W-34RT



Model HT-SERIES

Equivalent to Kearney "O" Type Dies for 4-6 Ton Tools

Features

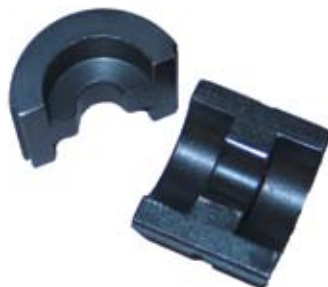
- Fits All Existing Tools Accepting "O" Type Dies
- Stamped with Kearney Die Size
- Black Oxide Finish

HUSKIE	KEARNEY	HUSKIE	KEARNEY
HT-B	B	HT-510	510 (HEX)
HT-D	D	HT-635	635 (HEX)
HT-D3	D3	HT-747	747 (HEX)
HT-J	J	HT-316	3/16
HT-K	K	HT-14	1/4
HT-O	O	HT-516	5/16
HT-P	P	HT-38	3/8
HT-T	T	HT-12	1/2
HT-737	737	HT-916	9/16
HT-781	781	HT-1932	19/32
HT-840	840	HT-58-1	5/8-1
HT-845	845	HT-1116	11/16



Model HT41-SERIES

Equivalent to Burndy and Kearney "U" Type Dies for 12 Ton Tools



HUSKIE	ALCOA	HUSKIE	ALCOA
HT4107	74SH-03SH	HT4131	72AH
HT4108	75SH-05SH	HT4132	73AH-08AH
HT4109	76SH	HT4140	07CD
HT4111	11AH	HT4141	08CD
HT4120	20AH-14AH	HT4142	09CD
HT4128	74AH-10AH	HT4155	72SH-01SH
HT4129	75AH-12AH	HT4156	73SH
HT4130	76AH	HT4180	13AH-80EA

Features

- Fits All Existing Tools Accepting "U" Style Dies
- Marked with Huskie and Equivalent Burndy "U" Die Number, or Alcoa "B" Die Number, or Kearney Die Size
- Die Nest Engraved with Huskie Die Number Suffix

HUSKIE	BURNDY	HUSKIE	BURNDY	HUSKIE	BURNDY	HUSKIE	KEARNEY
HT41G	U-BG	HT41DG	U-238	HT41AT	U5CRT	HT41KA	1/4
HT41J	U-C	HT41DH	U-239	HT41AY	U25RT	HT41KB	3/8
HT41V	U-D	HT41DL	U-242	HT41AZ	U26RT	HT41KC	5/16
HT41X	U-D3	HT41DM	U-243	HT41BA	U27RT	HT41KD	1/2
HT41Y	U-E	HT41DP	U-245	HT41BC	U28RT	HT41KE	9/16
HT41Z	U-F	HT41DT	U-247	HT41BE	U29RT	HT41KF	19/32
HT41AB	U-H	HT41DV	U-248	HT41GF	U2CABT	HT41KG	5/8-1
HT41AF	U-L	HT41DW	U-249	HT41GM	U4CABT	HT41KH	11/16
HT41AG	U-M	HT41DY	U-251	HT41GE	U6CABT	HT41KI	3/4
HT41AJ	U-N	HT41DZ	U-252	HT41GL	U8CABT	HT41KK	29/32
HT41AK	U-O	HT41EK	U-261	HT41BF	U30RT	HT41KL	15/16
HT41AM	U-R	HT41FG	U-305	HT41BJ	U31RT	HT41KM	1-2
HT41BX	U-161	HT41FM	U-316	HT41BK	U32RT	HT41KN	1-1/8-2
HT41BZ	U-162	HT41FN	U-317	HT41BL	U34RT	HT41KO	1-1/2-2
HT41CB	U-163	HT41FU	U-321	HT41BM	U36RT	HT41KP	510
HT41CD	U-164	HT41FX	U-327	HT41BP	U39RT	HT41KQ	572
HT41CE	U-165	HT41GK	U-373	HT41EX	U25ART	HT41KR	635
HT41CF	U-166	HT41GX	U-468	HT41EY	U26ART	HT41KS	737
HT41CG	U-167	HT41HM	U-490	HT41GW	U27ART	HT41KT	747
HT41CJ	U-168	HT41JM	U-654	HT41EZ	U28ART	HT41KU	781
HT41CK	U-169	HT41JN	U-655	HT41FW	U29ART	HT41KV	BKT
HT41CL	U-170	HT41JP	U-658	HT41GZ	U30ART	HT41AE	840
HT41CT	U-203	HT41JR	U-659	HT41FA	U31ART	HT41U	U
HT41DE	U-236	HT41KJ	U-705	HT41HH	U32ART	HT41KX	727
HT41DF	U-237	HT41LG	U-788	HT41FB	U34ART		
		HT41AE	U-K840	HT41HG	U36ART		
		HT41AX	U1CRT	HT41LJ	U39ART2		
		HT41AW	U2CRT	HT41CUT	Cutter Dies		
		HT41AV	U3CRT	HT41TEST	Test Dies		
		HT41AU	U4CRT				



Model HTK-SERIES

Equivalent to Kearney "WH-2" (10.7 Ton) & "WH-3" (12 Ton) Type Dies

Features

- Fits All Existing Tools Accepting "O" Type Dies
- Stamped with Kearney Die Size
- Black Oxide Finish

HUSKIE	KEARNEY	HUSKIE	KEARNEY	HUSKIE	KEARNEY	HUSKIE	KEARNEY
HTK	BKT	HTK-510	510	HTK-14	1/4	HTK-34H	3/4 (HEX)
HTK-C	C	HTK-572	572	HTK-516	5/16	HTK-2932H	29/32 (HEX)
HTK-D	D	HTK-635	635	HTK-38	3/8	HTK-1516	15/16
HTK-N	N	HTK-727	727	HTK-12	1/2	HTK-1-2H	1-2 (HEX)
HTK-N-2	N (WH-3 Only)	HTK-737	737	HTK-916	9/16	HTK-1-18-2H	1-1/8
HTK-O	O	HTK-747	747	HTK-1932	19/32	HTK-1-516H	1-1/2 (HEX)
HTK-P	P	HTK-781	781	HTK-58-1	5/8-1	HTK-1-12H	1-1/2 (HEX)
HTK-U	U	HTK-840	840	HTK-1116	11/16	HTK-1-12H-3	1-1/2 (WH-3 Only)



Model HT61-SERIES

Equivalent to Burndy "P" Type Dies for 15 Ton Tools

Features

- Fits All Existing Y46 Heads Accepting "P" Type Dies
- Marked with Huskie and Equivalent Burndy "P" Type Dies
- Black Oxide Finish
- Polished Die Nest

HUSKIE	BURNDY	HUSKIE	BURNDY
HT61BP	P39RT	HT61FC	P39ART
HT61BR	P40RT	HT61HJ	P40ART
HT61BU	P44RT	HT61FD	P44ART
HT61BV	P46RT	HT61AC	PKR
HT61KX	P-724	HT61AJ	PN
PU-15	DIE ADAPTER		



Model HA60-SERIES

Equivalent to Alcoa 60 Ton Dies



Features

- Fits All Existing 60 Ton Presses Accepting 60 Ton Shell Type Dies
- Marked with Huskie and Equivalent Alcoa Catalog Number
- Black Oxide Finish

HUSKIE	ALCOA	HUSKIE	ALCOA
HA60-01	6010SH	HA60-27	6040AH
HA60-02	6012SH	HA60-28	6074AH
HA60-03	6014SH	HA60-29	6075AH
HA60-04	6016SH	HA60-30	6076AH
HA60-05	6018SH	HA60-40	6007CD
HA60-06	6020SH	HA60-41	6008CD
HA60-07	6074SH	HA60-42	6009CD
HA60-08	6075SH	HA60-43	6010CD
HA60-09	6076SH	HA60-44	6011CD
HA60-20	6020AH	HA60-45	6012CD
HA60-21	6024AH	HA60-46	6013CD
HA60-22	6027AH	HA60-47	6014CD
HA60-23	6030AH	HA60-48	6015CD
HA60-24	6034AH	HA60-49	6016CD
HA60-25	6036AH	HA60-50	6017CD
HA60-26	6038AH		

Model HA100-SERIES

Equivalent to Alcoa 100 Ton Dies



Features

- Fits All Existing 100 Ton Presses Accepting 100 Ton Shell Type Dies
- Marked with Huskie and Equivalent Alcoa Catalog Number
- Black Oxide Finish

HUSKIE	ALCOA	HUSKIE	ALCOA	HUSKIE	ALCOA
HA100-01	10010SH	HA100-24	10034AH	HA100-41	10010CD
HA100-02	10012SH	HA100-25	10036AH	HA100-42	10009CD
HA100-03	10014SH	HA100-26	10038AH	HA100-43	10010CD
HA100-04	10016SH	HA100-27	10040AH	HA100-44	10011CD
HA100-05	10018SH	HA100-28	10074AH	HA100-45	10012CD
HA100-06	10020SH	HA100-29	10075AH	HA100-46	10013CD
HA100-07	10074SH	HA100-30	10076AH	HA100-47	10014CD
HA100-08	10075SH	HA100-34	10042AH	HA100-48	10015CD
HA100-20	10020AH	HA100-36	10044AH	HA100-49	10016CD
HA100-21	10024AH	HA100-37	10046AH	HA100-50	10017CD
HA100-22	10027AH	HA100-38	10048AH	HA100-51	10018CD
HA100-23	10030AH	HA100-40	10007CD	HA100-52	10019CD
				HA100-53	10020CD

Huskie Die Chart

Huskie Dies are configured to be equivalent to Burndy dies of respective size. When using Huskie HT series dies consult the connector manufacturer for their recommended die cross referencing and application instructions. All Huskie dies are machined or cast from solid steel stock and case hardened to 45-50 HRC and are guaranteed for 10,000 operations. These dies are also marked with HT numbers and Burndy cross reference numbers to make cross referencing easy and less confusing. The following chart lists Huskie and equivalent Burndy numbers for reference only. Other manufacturer die numbers are also listed to aid the user in selecting the proper die cross reference numbers when using a particular connector. All connectors are different and the connector manufacturer should be consulted in each case. Many manufacturers offer different size connectors for the same wire size. Huskie Tools, Inc. is not responsible in the event of misuse or misapplication of die sets. Huskie Tools is not a connector manufacturer, but a tool and die supplier.

FOR REFERENCE ONLY! CONSULT YOUR CONNECTOR MANUFACTURER FOR EXACT CABLE, CONNECTOR AND DIE SELECTION.

Approximate Cu	Conductor Range Al	Die Color Code	Huskie Die Set Catalog Number	Burndy Index	Burndy Die Set Catalog Number	Terminal Size
6 AWG	8WG	BLUE	H41AT/HT41GL	7/374	U5CRT/U8CABT	24
4 AWG	6 AWG	GREY	HT41AU/HT41GE	8/346	U4CRT/U6CABT	29
2 AWG		BROWN	HT41AW	10	U2CRT	33
1 AWG	4 AWG	GREEN	HT41AX	11	U1CRT	37
	4 AWG	GREEN	HT41GM	375	U4CABT	37
1/0 AWG	2 AWG	PINK	HT41AY	12	U25RT	42H
	2 AWG	PINK	HT41GF	348	U2CABT	42H
2/0 AWG		BLACK	HT41AZ	13	U26RT	45
3/0 AWG		ORANGE	HT41BA	14	U27RT	50
	1/0 AWG	TAN	HT41EX	296	U25ART	50
4/0 AWG		PURPLE	HT41BC	15	U28RT	54H
	2/0 AWG	OLIVE	HT41EY	297	U26ART	54H
250 MCM		YELLOW	HT41BE	16	U29RT	62
	3/0 AWG	RUBY	HT41GW	467	U27ART	60
300 MCM		WHITE	HT41BF	17	U30RT	66
	4/0 AWG	WHITE	HT41EZ	298	U28ART	66
350 MCM		RED	HT41BJ	18	U31RT	71H
	250 MCM	RED	HT41FW	324	U29ART	71H
400 MCM		BLUE	HT41BK	19	U32RT	76
	300 MCM	BLUE	HT41GZ	470	U30RT	76
500 MCM		BROWN	HT41BL	20	U34RT	87H
	350 MCM	BROWN	HT41FA	299	U3RT	87H
600 MCM	400 MCM	GREEN	HT41HH/HT41BM	472/22	U32ART/U36RT	94H
	500 MCM	PINK	HT41FB	300	U34ART	99H
750 MCM		BLACK	HT41BP	24	U39RT	106H
	600 MCM	BLACK	HT41HG	473	U36ART	106H
	700/750 MCM	YELLOW	HT41LJ	936	U39ART-2	115H



Wire Rope Dies

12 Ton "U" Type Compression Dies



Features

- Designed for Duplex Oval Sleeves and Button Stops
- For use on Copper and Aluminum Only
- Fits in Any 12 Ton Tool that Uses Standard "U" Dies

ITEM #	DESCRIPTION	ALUMINUM	COPPER
18AC	WIRE ROPE DIE 1/8" AC	1/8"	1/8"
316AC	WIRE ROPE DIE 3/16" AC	3/16"	3/16"
14AC	WIRE ROPE DIE 1/4" AC	1/4"	1/4"
516AC	WIRE ROPE DIE 5/16" AC	5/16"	5/16"
38AC	WIRE ROPE DIE 3/8" AC	3/8"	3/8"
716A12C	WIRE ROPE DIE 7/16" A, 1/2" C	7/16"	1/2"
716C	WIRE ROPE DIE 7/16" C		7/16"
12A	WIRE ROPE DIE 1/2" A	1/2"	

Model HTK CASE and Model DIE-CASE

Die Case and Plastic Die Carrying Case



Features of HTK CASE

- Shock Absorbing Cushion of Air Between Double Walls
- Holds Up To 10 Die Sets

Features of DIE-CASE

- Holds 18 "U" Type Die Sets or 8 "P" Type Die Sets
- Constructed of Heavyweight Plastic

The **HTK CASE** offers a convenient way to store your Huskie dies. The case is a custom molded case made with a shock absorbing cushion of air between sturdy double walls. It has ten individual compartments that will hold up to ten die sets. Will hold: HTK-Series, HT41 Series, HT58-Series and HT-Series dies.

The Huskie model **DIE-CASE** is offered as a stand alone die carrying case and is the same case supplied with the REC-3000 Series kits. It will hold either 18 "U" type die sets or 8 "P" type die sets. It is constructed of heavyweight plastic with a hinged see-through top for easy identification of die sets.

Gauges

Specifications PG-1

Description	In Line Pressure Gauge Kit
Weight	3 lbs.
Dial Face	2-1/2"
Size	9" x 4.5" x 1.5"

Specifications PG-4/PG-4K

Description	12 Ton Test Gauge Kit (PG-4) 12 Ton Test Gauge Kit-Kearney (PG-4K)
Weight	3.5 lbs.
Dial Face	4"
Size	9" x 4" x 1.5"

Specifications PG-15

Description	6 Ton Test Gauge Kit
Weight	5 lbs.
Dial Face	4"
Size	10.5" x 4" x 2"

Specifications PG-58

Description	6 Ton test Gauge Kit
Weight	1.78 lbs.
Dial Face	4"
Size	7.5" x 4" x 1.75"

Specifications PG-610A

Description	15 Ton Test Gauge Kit
Weight	3.3 lbs.
Dial Face	4"
Size	10" x 4" x 1.75"

Specifications PG-ND

Description	5 Ton Test Gauge Kit
Weight	3.4 lbs.
Dial Face	4"
Size	9.5" x 4" x 1.5"

PG-1



PG-4



PG-15



PG-58



PG-610



PG-ND



The **PG-1**, in line pressure gauge has standard 3/8" couplers and a 10,000 psi indicator. It is used to test pump output pressure. Male and female couplers allow you to install it between the tool head and the pump.

The **PG-4** gauge is used to calibrate 12 ton output tools. It was designed to fit in all brands of 12 ton tools, and is supplied with U-type test dies. If you are using Kearney tools, specify PG-4K which comes with TDK-1 test dies.

The **PG-15** is designed to check pressure on all Huskie 6 ton hydraulic tools. It is supplied with necessary adapter.

The **PG-58** is designed to check internal pressure on all pistol grip style battery operated tools. It is necessary to check pressure on our dieless tools.

The **PG-610A** gauge is used to calibrate 12 & 15 ton output tools. The gauge is supplied with HT41 test die a "U" die adapter (not supplied) is necessary to test a 15 ton tool.

The **PG-ND** gauge is used to calibrate the ECO-EZ Series tools, as well as the REC-ND and ECO-ND Series tools.

Our PG-4, PG-15, PG-58, & PG-610A gauges come complete with necessary dies, carrying case, and certification.





HYDRAULIC & MANUAL CUTTING TOOLS

Hydraulic & Manual Cutting Tools



S-Series Hydraulic Handheld Cutters
P. 71



Ratchet Cable Cutters
P. 69



SP-Series Hydraulic Handheld Cutter Heads
P. 73



Low Pressure Cable Cutter
P. 77



MC-500
P. 77



Cable and Insulation Strippers
P. 78



Hydraulic Scissor Cutters and Heads
Pgs. 74-76



Model RI-500

Ratchet Cable Cutter



The **RI-500** was designed to cut up to 500 MCM copper cables. The special ergonomic handle design gives you extra leverage at the bottom and is narrowed at the top for easier handling.

The durable handles are made of a high visibility, orange plastic. Its cutting head is black oxide coated to help reduce corrosion.

NOTE: DO NOT CUT STEEL.

Specifications

Weight	1.5 lbs.
Length	10"
Handle Span	5.5"

Cutting Capacities

1.25" O.D. Al
500 MCM Cu

Optional Accessories

Z325A-11	Fixed Replacement Blade
Z325A-12	Moveable Replacement Blade

Features

- Longer Handles for Leverage
- Thumb Lever to Release the Blade
- Carrying Pouch Included

Model R-750B

Ratchet Cable Cutter



The **R-750B** has a ratchet mechanism that has been designed to withstand the stress of 750 MCM copper and aluminum cables with a maximum O.D. of 1-3/4." The blades have a 100% cutting surface which provides the best possible cutting leverage.

A thumb release lever allows the operator to back out of a cut when necessary. A locking mechanism closes the handles for easy storage.

NOTE: DO NOT CUT STEEL.

Specifications

Weight	2 lbs.
Length	9"
Handle Span	6.5"

Cutting Capacities

1.75" O.D. Al
750 MCM Cu

Optional Accessories

1819.016	Fixed Blade
1819.013	Moveable Blade

Features

- Thumb Lever to Release Blade
- Carrying Pouch Included

Model S-SERIES

Handheld Hydraulic Cutters

Huskie's **S-Series** tools cut anything from guy wire* to anchor rod and most overhead and underground cables. The S-series cutters are portable, lightweight, and made to last years under the toughest field conditions. The S-40B and S-85 feature a two stage pumping piston for rapid advance.

The new S-240CC, S-32CC and SP-24CC hydraulic cutters were specially engineered to cut the toughest EHS guy wire, ground and anchor rods. The SP-24CC is the remote head version, which requires an external 10,000 psi pump in order to operate. The anvil style, center cut blades eliminate jamming problems common to shear style cutters, and the blades are easily replaced in the field. The tools are made of high grade steel and have rubber handle grips. All tools are black zinc oxide coated to help reduce corrosion. A flip-top latch opens the tool jaw to easily accept cables and wires. The head can be rotated up to 180° to facilitate easy wire positioning and operator leverage.

Consult the chart below to pick the proper cutter for your needs. If there are any questions about capacities, or special applications please contact Huskie.

***NOTE:** DO NOT CUT EHS GUY WIRE. FOR EHS GUY WIRE SPECIFY S-240CC, S-32CC OR THE REMOTE HEADS SP-24CC OR SP-32CC1.

Specifications									
Model	S-16	S-20	S-240	S-32	S-40B	S-55	S-85	S-240CC	S-32CC
Output	4.4 Ton	4.4 Ton	7.8 Ton	19.8 Ton	6.3 Ton	13 Ton	2.7 Ton	7.8 Ton	19.8 Ton
Weight	6 lbs.	6 lbs.	9 lbs.	21 lbs.	12 lbs.	17 lbs.	15 lbs.	11 lbs.	23 lbs.
Length	15"L	15"L	17"L	27"L	23"L	24"L	26"L	18.5"L	27"L
Jaw Opening	.6"	.75"	.9"	1.25"	1.6"	2"	3.3"	.9"	1.25"
Capacities									
Wire Ropes	16mm	20mm	22mm	32mm	20mm	26mm	Do Not Cut	Do Not Cut	Do Not Cut
	5/8"	3/4"	7/8"	1-1/4"	3/4"	1"			
Soft Steel Bolts	16mm	17mm	22mm	32mm	20mm	32mm	Do Not Cut	16mm	26mm
	5/8"	11/16"	7/8"	1-1/4"	3/4"	1-1/4"		5/8"	1"
Rebar, Ground & Anchor Rod	13mm	13mm	16mm	22mm	16mm	20mm	Do Not Cut	16mm	26mm
	1/2"	1/2"	5/8"	7/8"	5/8"	3/4"		5/8"	1"
Cu & Al Wire	16mm	20mm	22mm	32mm	40mm	50mm	Do Not Cut	Do Not Cut	Do Not Cut
	5/8"	3/4"	7/8"	1-1/4"	1-1/2"	2"			
ACSR	16mm	20mm	22mm	32mm	40mm	50mm	Do Not Cut	Do Not Cut	Do Not Cut
	5/8"	3/4"	7/8"	1-1/4"	1-1/2"	2"			
Standard Guy Wire	13mm	14mm	16mm	22mm	16mm	20mm	Do Not Cut	14mm	22mm
	1/2"	1/2"	5/8"	7/8"	5/8"	3/4"		9/16" EHS	7/8" EHS
Telephone & Lead Sheathed Cable	Do Not Cut	Do Not Cut	Do Not Cut	Do Not Cut	Do Not Cut	Do Not Cut	85mm	Do Not Cut	Do Not Cut
							3/35"		
Chain	Do Not Cut	Do Not Cut	Do Not Cut	Do Not Cut	Do Not Cut	Do Not Cut	Do Not Cut	1/4"	1/2"



Model S-SERIES

Handheld Hydraulic Cutters



S-16



S-20



S-240



S-240CC



S-32



S-32CC



S-40B



S-55



S-85

Model SP-SERIES

Hydraulic Operated Remote Cutting Heads

The **SP-SERIES** remote head units connect to any 10,000 psi, high pressure, hydraulic pumping system. Choose from seven different models of production cutters, to cut costs and efforts. A 3/8" screw-type male coupler is supplied with each tool. The Huskie remote cutters have a hinged head which can be opened for easy cable or bar insertion. The movable blade advances in a shear fashion, to cut the material cleanly. When the cutting pressure is relieved an internal ram spring retracts the blade. The guillotine cutting style was chosen over scissor type cutting because of its powerful output force, larger cable capacities, compact size and reliability.

All tools can be used under water, consult factory for specific applications.

NOTE: FOR EHS GUY WIRE SPECIFY S-24CC, S-32CC OR THE REMOTE HEAD SP-24CC.

Features

- Lightweight and Portable
- Operate from Any 10,000 psi Hydraulic Source
- Works in Any Position

Specifications									
Model	SP-20	SP-24	SP-24CC	SP-32	SP-32CC1	SP-40	SP-55	SP-85	SP-100
Output	4.4 Ton	7.8 Ton	7.8 Ton	20 Ton	24 Ton	6.28 Ton	13 Ton	2.7 Ton	8.3 Ton
Weight	3 lbs.	6 lbs.	21 lbs.	21 lbs.	26 lbs.	8.5 lbs.	20 lbs.	16 lbs.	29 lbs.
Length	8"L	11"L	14"L	14"L	13.5"L	12"L	17"L	19"L	24"L
Jaw Opening	.75"	.9"	.9"	1.25"	1.25"	1.6"	2"	3.3"	4"

Capacities									
Wire Ropes	20mm	22mm	Do Not Cut	32mm	Do Not Cut	20mm	26mm	Do Not Cut	Do Not Cut
	5/8"	7/8"		1-1/4"		3/4"	1"		
Soft Steel Bolts	14mm	20mm	16mm	32mm	26mm	16mm	32mm	Do Not Cut	Do Not Cut
	9/16"	3/4"	5/8"	1-1/4"	1"	5/8"	1-1/4"		
Rebar, Ground & Anchor Rod	13mm	16mm	16mm	26mm	26mm	16mm	20mm	Do Not Cut	Do Not Cut
	1/2"	5/8"	5/8"	1"	1"	5/8"	3/4"		
Cu & Al Wire	20mm	22mm	Do Not Cut	32mm	Do Not Cut	40mm	50mm	76mm	3-1/2"
	3/4"	7/8"		1-1/4"		1-1/2"	2"	3"	
ACSR	20mm	22mm	Do Not Cut	32mm	Do Not Cut	40mm	50mm	Do Not Cut	Do Not Cut
	3/4"	7/8"		1-1/4"		1-1/2"	2"		
Standard Guy Wire	14mm	16mm	14mm	22mm	22mm	16mm	20mm	Do Not Cut	Do Not Cut
	1/2"	5/8"	9/16" EHS	7/8"	7/8" EHS	5/8"	3/4"		
Chain	Do Not Cut	Do Not Cut	1/4"	Do Not Cut	1/2"	Do Not Cut	Do Not Cut	Do Not Cut	Do Not Cut
Comm. Cables	Do Not Cut	Do Not Cut	Do Not Cut	Do Not Cut	Do Not Cut	Do Not Cut	Do Not Cut	3.35"	4"
Lead Sheath Cables	Do Not Cut	Do Not Cut	Do Not Cut	Do Not Cut	Do Not Cut	Do Not Cut	Do Not Cut	3.35"	4"



Model SP-SERIES

Hydraulic Operated Remote Cutting Heads



SP-20



SP-24



SP-24CC



SP-32



SP-32CC1



SP-40



SP-55



SP-85



SP-100

Model YS-30, YSP-30

Handheld Hydraulic Scissor Cutter and Remote Head

Specifications	YS-30	YSP-30
Output	4.4 Ton	4.4 Ton
Weight	8 lbs.	6 lbs.
Length	18"	12"

Cutting Capacities	YS-30	YSP-30
Bar	Do Not Cut	Do Not Cut
Guy Wire	Do Not Cut	Do Not Cut
ACSR	336	336
Copper	500 MCM*	500 MCM*
Aluminum	1.18" O.D.	1.18" O.D.

Order Data	
YS-30	Hydraulic Cutter
YSP-30	Remote Head Unit
HTADPT (Optional)	Hot Stick Adapter

Features

- Open Jaw Design
- Available in Remote Head and Manual Hydraulic

* Will not cut ALL 500 MCM copper cable-consult factory.



The **YS-30** and **YSP-30** scissor-type tools are designed to cut ACSR up to 477 and copper and aluminum cables up to 1.18" O.D. The YS-30 is ideal for close quarter work and bucket truck applications where the open jaw cutter can easily grab and cut the cables. The handles are rubber covered for sure grip and are rated at 20KV.

Most internal parts are interchangeable with our model S-20, which makes repair parts readily available. The YSP-30 remote cutting head requires an external, high pressure, 10,000 psi pumping source.

NOTE: These tools will not cut 4/0 Penguin, or 3/0 Pigeon ACSR cables.



Model YS-34, YSP-34

Handheld Hydraulic Scissor Cutter and Remote Head



Specifications	YS-34	YSP-34
Output	4.4 Ton	4.4 Ton
Weight	8.5 lbs.	6 lbs.
Length	18"	12"

Cutting Capacities	YS-34	YSP-34
Copper	800 MCM	800 MCM
Aluminum	1.25"	1.24"
ACSR	Do Not Cut	Do Not Cut

Order Data	
YS-34	Hydraulic Cutter
YSP-34	Remote Cutter Head

Features

- Open Jaw Design
- Copper and Aluminum Cables Only
- Available in Remote Head and Manual Hydraulic

The **YS-34** and **YSP-34** were designed to cut 800 MCM hard drawn copper cable. The YS-34 is a portable hand-held unit and the YSP-34 is a remote cutter head that requires an external 10,000 psi pumping source.

NOTE: DO NOT CUT STEEL.

Model YS-60, YSP-60 & YSP-85YC

Handheld Hydraulic Scissor Cutter and Remote Heads

Specifications	YS-60	YSP-60
Output	4.4 Ton	6.6 Ton
Weight	8 lbs.	6 lbs.
Length	18"	12"

Cutting Capacities	YS-60	YSP-60
Bar	DO NOT CUT	DO NOT CUT
Guy Wire	DO NOT CUT	DO NOT CUT
ACSR	336	336
Copper	750 MCM	750 MCM
Aluminum	1.18" O.D.	1.18" O.D.

Specifications for YSP-85YC

Output	8 Ton
Weight	10.5 lbs.
Size	18"L x 8"H x 4.7"W

Cutting Capacities for YSP-85YC

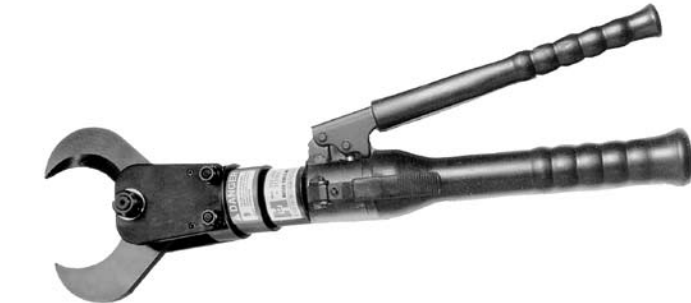
ACSR	DO NOT CUT
Aluminum	3"
Copper	1000 MCM
Telecommunication	3"
Lead Sheath	2.5"

Order Data

YS-30	Hydraulic Cutter
YSP-30	Remote Head Unit
YSP-85YC	Remote Head Unit
HTADPT (Optional)	Hot Stick Adapter

Features

- Open Jaw Design
- Available in Remote Head and Manual Hydraulic



The **YSP-60** is similar to the YSP-30, except it has a 2" cable capacity. It is ideal for aluminum cables up to 2" O.D. and 500 MCM copper. The **YS-60** is the hand-held cutter version. They are mostly used on the larger URD cables that require a smooth cut before sleeving and are designed to cut aluminum and copper or lead sheathed cables only.

The **YS-85YC** is designed to cut various cables, including copper up to 1000 MCM and Aluminum up to 3". The scissor-type cutter head provides exceptional ease of use and maneuverability when making cuts.

NOTE: DO NOT CUT STEEL.



Model DA-12

Hydraulic Low Pressure 4" Cable Cutter



The **DA-12** hydraulic hand-held, cable cutter can be operated directly from the utility line truck. At 2,500 psi pressure it can cut four-inch lead sheath cables as well as 4200 pair communications cables. A 6 ton cutting force is produced at 2,500 psi pressure, less than 2,500 psi will reduce the cutting capacity. It operates on open center trucks and comes with HTMA couplers.

The four inch jaws slice through lead, copper and aluminum cables cleanly and without jamming because of the double-acting system. The DA-12 is portable, with non-slip, knurled handles and a safety ring. It has a positive open and close position and a special built-in safety trigger. It stops when you stop.

Specifications

Output	6 Ton at 2,500 psi
Weight	31 lbs.
Size	15" x 15" x 17"

Additional Data

See Low Pressure Hose (p. 87) and Coupler Page (p.88) for options.

Cutting Capacities

Lead Sheath	4"
Comm. Cables	4200 pair

Features

- Operates on 2500 psi
- 4" Jaw Opening
- Safety Trigger

Model MC-500

Cable Slicer for Copper and Aluminum



These **MC-500** cable slicers are furnished with tough, durable plastic/fiberglass handles to withstand the daily strains of continuous operation. The handles have been electrically tested to 50KV. Proper care and cleaning should be exercised to maintain the inherent dielectric properties of the fiberglass.

The sharp blades are made of high strength chromium steel, which guarantees long field life. Replaceable blades and handles are available.

NOTE: DO NOT CUT STEEL.

Specifications

Weight	4 lbs.
Length	25"
Handle Span	40"
Jaw Opening	1.25"

Cutting Capacities

Cable	500 MCM
-------	---------

Features

- Durable Plastic Fiberglass Handle
- Electrically Tested 50 KV
- Up to 40" Handle Span

Model AS-025 & AS-118

Cable Stripper for Semi-con and Secondary

Order Data

AS-118	Adjustable Stripper
AS-025	Fixed .025 Depth Stripper
ASB	Replacement Blade

Features

- Semi-con Stripper
- .025 Blade Depth Available
- Up to 1" Maximum O.D.



The Huskie **AS-118** cable stripper is used for cables from .180 to 1 inch max. O.D. It has an adjustable blade depth to a maximum of .118" for use on most plastic jacketed cables. Tough insulation can be cut in a spiral direction for easier stripping, while other insulation can simply be cut longitudinally for quicker stripping. The model **AS-025** is the same, except for a fixed blade depth of .025" used for many semi-con jackets.

Model NP-400

Insulation Stripper

Accessory

400-10	Replacement Blade
--------	-------------------

Features

- Capable of Midspan Stripping
- Up to 1-1/4" O.D.
- Copper and Aluminum
- Spring Load



The Huskie **NP-400** can strip insulation from a conductor with an O.D. of .35" to 1-1/4" and a maximum insulation thickness of 3mm (.118). This tool will not work on semi-conductor since the cutting blade uses a scoop design to pull insulation away from the wire strands. It is most commonly used on jacketed aluminum and copper cables for both underground and overhead. Our peeler can handle mid-span stripping as well as cable end preparation. A simple rotation and hand force is all it takes to remove the jacket. Either handle can be removed for close quarter operation.

It is necessary to change the blade depth according to the insulation thickness. Send cable samples to Huskie for testing.

NOTE: NOT FOR REMOVING SEMICONDUCTOR JACKETS.

HYDRAULIC & MANUAL CUTTING TOOLS





HYDRAULIC PUMPS & PUNCHES

Hydraulic Pumps & Punches



Huskie Ambassador
Bruce Oakes, Foreman
Company: Pike Electric
South Carolina

Bruce holds the R-14EF and SH-70M.



Hydraulic Hand and Foot Pumps
P. 81



Hydraulic Steel Punch & Dies
P. 85

Hydraulic Pumps
Pgs. 82-84



Foot Switch
P. 86



Couplers
P. 88



Remote Control Handle
P. 86



Hydraulic Hose
P. 87



Model HP-700

10,000 psi Hydraulic Hand Pump



The **HP-700** a portable, tough, hydraulic steel pump that has two speed pumping pistons for rapid advance and an external adjustable pressure setting from 4,000 to 10,000 psi output. An internal oil bladder allows the tool to be used in any position.

Our exclusive replaceable, by-pass cartridge is standard in the HP-700. Field repairs and pressure adjustments can be made in minutes. Use our PG-1 gauge for pressure adjustments.

NOTE: When using any of these high pressure tools, always use 10,000 psi rated non-conductive hose (NC-16 series).

Specifications

Weight	20 lbs.
Length	23"
Oil Reservoir	44 cu/in fluid
1st Stage	.75 cu/in per stroke
2nd Stage	.14 cu/in per stroke

Features

- Two-Stage Pump Piston for Rapid Advance
- External Pressure Adjustment from 4,000-10,000 psi
- Can Be Operated in Any Position
- Knob Type Release Valve

Model FP-700

10,000 psi Hydraulic Foot Pump



The **FP-700** a portable, tough, hydraulic steel pump that has two speed pumping pistons for rapid advance and an external adjustable pressure setting from 4,000 to 10,000 psi output. An internal oil bladder allows these tools to be used in any position.

Our exclusive replaceable, by-pass cartridge is standard in the FP-700. Field repairs and pressure adjustments can be made in minutes. Use our PG-1 gauge for pressure adjustments.

NOTE: When using any of these high pressure tools, always use 10,000 psi rated non-conductive hose (NC-16 series).

Specifications

Weight	25 lbs.
Length	28"
Oil Reservoir	44 cu/in fluid
1st Stage	.75 cu/in per stroke
2nd Stage	.14 cu/in per stroke

Features

- Two-Stage Pump Piston for Rapid Advance
- External Pressure Adjustment from 4,000-10,000 psi
- Can Be Operated in Any Position
- Knob Type Release Valve

Model R-14EF

1/2 HP, 10,000 psi Hydraulic Pump

Specifications

Weight	34 lbs.
Size	7"L x 6"W x 14"H
Power Output	1/2 HP-6.5 Amp
Delivery @ 200 psi	157 cu/in/m
Delivery @ 10,000 psi	19 cu/in
Oil Capacity	120 cu/in (2 quarts)

Optional Accessories

MC-14	Steel Carrying Case, p. 92
URH-14	Remote Control Handle, p. 86
FS-14	Foot Switch, p. 86

Features

- Remote Operation Allows Full Operator Control
- Advance and Hold Feature Standard
- Manual Control Directly on Pump Motor
- Pressure Adjustment from 4,000-10,000 psi



The **R-14EF** remote operated pump gives the operator complete control. Push buttons permit the user to advance and retract at will. The user is never committed to a full cycle, and can always back off at any time during the advance even under pressure. This feature increases efficiency because cuts and crimps can be adjusted as necessary, simply by stopping the advance or retract mode. A 10-foot remote control cable provides both safety and convenience. The user can set up an operation and then move away from the work site before engaging the tool. An over-ride switch on the pump allows full control at the pump motor. The low amperage of this pump allows it to be used virtually anywhere. The pressure can be easily adjusted between 4,000 and 10,000 psi and determined by using our PG-1 in-line gauge. Consult factory for proper adjusting procedure.

NOTE: When using any of these high pressure tools, always use 10,000 psi rated non-conductive hose (NC-16 series).

Model R-14EA

3/4 HP, 10,000 psi Single Acting Hydraulic Pump

Specifications

Weight	75 lbs. with Oil
Size	14"L x 13.25"W x 16"H
Power Output	3/4 HP - 8.2 Amp
Delivery @ 300 psi	157 in ³ /min
Delivery @ 10,000 psi	36 in ³ /min
Oil Capacity	182 cu/in (3 quarts)

Optional Accessories

URH-14	Remote Control Handle, p. 86
FS-14	Foot Switch, p. 86

Features

- Remote Operation Allows Full Operator Control
- Manual and Automatic Mode for Additional Versatility
- 3/4 HP Rating
- Low Amperage Requirement



The **R-14EA** is a fully remote controlled, single acting, 10,000 psi, electric pump. The two button hand control allows the user to advance, hold, or release at any time. When 10,000 psi is reached, the pump will automatically shut off and hold until the operator pushes the release button to retract the tool. There is an auto cycle switch that allows the operator to push the advance button and the pump will automatically advance, run to 10,000 psi and release. This feature is mostly used for production crimping and cutting where the operator must have the freedom of both hands. A remote foot control pedal is optional.

NOTE: When using any of these high pressure tools, always use 10,000 psi rated non-conductive hose (NC-16 series).



Model R-14EAD

3/4 HP, 10,000 psi Double Acting Hydraulic Pump



The **R-14EAD** is a fully remote controlled, double acting, 10,000 psi, electric pump. The hand control allows the user to advance or release at any time. There is an auto cycle switch that allows the operator to push the advance button and the pump will automatically advance, run to 10,000 psi and release. This feature is used mostly for production crimping and cutting, where the operator must have the freedom of both hands. A remote foot control pedal is optional.

NOTE: When using any of these high pressure tools, always use 10,000 psi rated non-conductive hose (NC-16 series).

Specifications

Weight	75 lbs. with Oil
Size	14"L x 13.25"W x 16"H
Power Output	3/4 HP - 8.2 Amp
Delivery @ 300 psi	157 in ³ /min
Delivery @10,000 psi	36 in ³ /min
Oil Capacity	182 cu/in (3 quarts)

Optional Accessories

FS-14	Foot Switch, p. 86
-------	--------------------

Features

- Remote Operation Allows Full Operator Control
- Manual and Automatic Mode for Additional Versatility
- Low Amperage Requirement

Model HPG-4

4 HP, Gas Engine 10,000 psi Hydraulic Pump



The **HPG-4** is a self-contained high pressure pump, with manual operation. It is equipped with a 4 HP Briggs & Stratton engine. A four-way valve controls the hydraulic fluid direction for the advance and retract modes. One double acting tool can be operated or two single acting tools at one time. Connection to one port for single acting tools will work since the control valve will dump the fluid when shifted to the retract position. The pump is very compact and comes with carrying handles.

NOTE: When using any of these high pressure tools, always use 10,000 psi rated non-conductive hose (NC-16 series).

Specifications

Weight	74 lbs. with Oil
Oil Capacity	5 Gallons
Gas Tank	3 Pints
Max Pressure	10,000 psi
Power Output	4 HP
Oil Delivery @ 100 psi	480 in ³ /min
Oil Delivery @ 10,000 psi	55 in ³ /min

Features

- Four Way Valve Allows for Single or Double Acting Capacity
- Standard Screw Type Male and Female Couplers



RC-5
Optional Roll/
Carry Cage



Model REC-P1 ROBO*PUMP

10,000 psi Battery Powered 28.8 Volt Pump

Specifications

Output	10,000 psi
Weight	23 lbs. with 2 Batteries
Size	16"L x 6"H x 10"D
Jaw Opening	1.5"

Crimping Estimates

	2 BP-70E
Using a 10 ft. Hose and EP-60W on 1272 ACSR	10
No Load Cycle Time	Advance 25 Sec., Retract 30 Sec.

Optional Accessories

FS-14	Foot Switch, p. 86
URH-14	Remote Handle, p. 86
REC-P1CASE	Steel Carrying Case, p. 92

Features

- Powerful 28.8 Volt
- Operate Up to Single Acting 60 Ton Press
- Adjustable 10,000 psi
- Eliminates the Need for AC Power
- Compact and Portable



The Huskie **REC-P1** is a 28.8 volt, battery operated hydraulic pump that runs on two 14.4 Volt Huskie BP-70 series batteries. The REC-P1 is supplied with a push button remote control that allows the operator to advance, hold, and retract when needed. The user is never committed to a full cycle and can always back off at any time during the advance— even when the pump is under pressure. High pressure, non-conductive hose can be attached to a 360° moveable swivel port on the pump. This swivel port allows the user to position the hose to fit in confined aerial buckets and manholes.

Both batteries must be inserted in the pump to operate. It is recommended to operate the pump with a 10 foot hose, up to a maximum of 20 feet. A longer hose will cause cycle times to increase.

We recommend you specify the Huskie SC-Series flush face dripless couplers, as not to deplete the oil in the reservoir when changing heads.

For additional ordering information, please refer to page 10.



Model SH-70M

35 Ton Hydraulic Steel Punch



The portable **SH-70M** punch was designed to punch holes through 1/2" mild steel, aluminum and copper. The punched hole size is 1/16" larger than your bolt size. A stripper guide extends on either side of the ram to strip the material after punching. This hand-held unit will operate from any 10,000 psi hydraulic pumping source.

Some uses include the punching of bus bars, tower iron, railing, I-beams and truck frames. Custom size punch and dies are available upon request. Oval and square sizes are also available. Consult factory for order information. The SH-70M and SH-70F comes complete with four sets of punch and die sizes for 3/8", 1/2", 5/8" and 3/4" bolts and carrying case.

NOTE: USE ONLY 10,000 psi RATED HOSE.

Specifications

Output	35 Ton
Weight	28 lbs.
Capacity	1/2" Thick Mild Steel
Max. Hole	13/16" Diameter
Dimensions	14" x 8" x 3.5"
Throat Depth	2.75"

Order Data

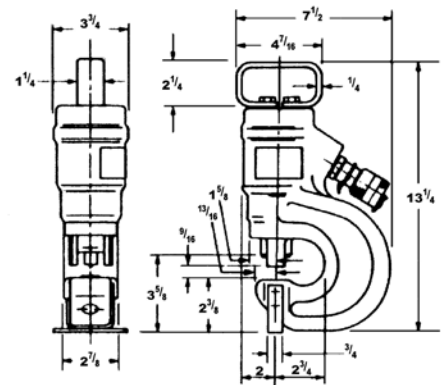
SH-70M	Steel Punch with Male Coupler
SH-70F	Steel Punch with Female Coupler

Features

- Punches UP TO 1/2" Mild Steel
- 13/16" Max Hold Diameter
- Will Punch: Oval, Round, Square, and Slotted Holes
- Custom Sizes Available
- Operates from a 10,000 psi Pump Source

Round Dies

ITEM	DESCRIPTION	BOLT SIZE
SHD-18	1/8" Punch & Die Set	
SHD-316	3/16" Punch & Die Set	
SHD-14	1/4" Punch & Die Set	
SHD-932	9/32" Punch & Die Set	
SHD-516	5/16" Punch & Die Set	
SHD-38	3/8" Punch & Die Set	
SHD-716	7/16" Punch & Die Set 10.5	3/8"
SHD-12	1/2" Punch & Die Set	
SHD-916	9/16" Punch & Die Set 13.5	1/2"
SHD-58	5/8" Punch & Die Set	
SHD-1116	11/16" Punch & Die Set 17.5"	5/8"
SHD-34	3/4" Punch & Die Set	
SHD-1316	13/16" Punch & Die Set 20.5	3/4"



Oblong Dies

ITEM	DESCRIPTION	BOLT SIZE
SHD-516X1316	5/16" X 13/16" Oblong Punch & Die Set	
SHD-38X1316	3/8" X 13/16" Oblong Punch & Die Set	
SHD-716X1316	7/16" X 13/16" Oblong Punch & Die Set	3/8"
SHD-12X38	1/2" X 3/8" Oblong Punch & Die Set	
SHD-12X34	1/2" X 3/4" Oblong Punch & Die Set	
SHD-12X1316	1/2" X 13/16" Oblong Punch & Die Set	
SHD-916X34	9/16" X 3/4" Oblong Punch & Die Set	1/2"
SHD-916X1316	9/16" X 13/16" Oblong Punch & Die Set	1/2"
SHD-58X1316	5/8" X 13/16" Oblong Punch & Die Set	
SHD-1116X1316	11/16" X 13/16" Oblong Punch & Die Set	5/8"
SHD-34X1316	3/4" X 13/16" Oblong Punch & Die Set	

Square Dies

ITEM	DESCRIPTION
SHD-14SQ	1/4" Square Punch & Die Set
SHD-38SQ	3/8" Square Punch & Die Set
SHD-716SQ	7/16" Square Punch & Die Set
SHD-12SQ	1/2" Square Punch & Die Set
SHD-1732SQ	17/32" Square Punch & Die Set
SHD-916SQ	9/16" Square Punch & Die Set

Hex Dies

ITEM	DESCRIPTION
SHD-716HEX	7/16" Hex Punch & Die Set
SHD-916HEX	9/16" Hex Punch & Die Set
SHD-1116HEX	11/16" Hex Punch & Die Set
SHD-1316HEX	13/16" Hex Punch & Die Set



Model URH-14

Remote Control Handle

Specifications

Weight	3 lbs.
Size	8" L x 1.5" W x 6.5" H

Order Data

URH-14	Remote Control Handle
REC-URH	Remote Control Handle for REC-P1

Features

- For Use with All Electrical and Battery Operated Single Acting Pumps
- Allows Operator One Hand Control at the Tool Head
- 10 Foot Cord



The **URH-14** remote control handle is for use with the R-14EF, R-14EA and REC-P1 pumps. It is equipped with a standard 3/8" high pressure coupler that can be easily matched to your existing tool head. A 10 foot, three wire control cable can be hooked directly to the R-14EF or hard wired to any pump that has similar remote control features. The URH-14 weighs only three pounds and is made of tough, durable, molded plastic with a double insulated on/off switch.

Model FS-14

Foot Switch

Specifications

Weight	4.2 lbs.
Size	9.5" L x 7" W x 3" H

Optional Accessories

URH-14	Remote Control Handle
FS-14	Foot Switch

Features

- For Use with All Electrical and Battery Operated Single Acting Pumps
- Allows Operator "Hands Free" Control of Advance and Retract Pump Mode
- 10 Foot Cord



The **FS-14** was designed to replace our pendant hand control on pump models R-14EF, R-14EA, R-14EAD and REC-P1. This foot control allows the operator to free his hands for better control of his work load. It has a green pedal for the advance mode and a red pedal for the retract mode. The FS-14 is mostly used in work bench applications.



Model NC-SERIES

10,000 psi High Pressure Hydraulic Hose



Our high pressure, non-conductive **NC-SERIES** hoses and couplers are rated at 10,000 psi working pressure. The hose ends are covered with a thick clear jacket of heavy duty shrink wrap to reduce the risk of hose bursts at these points. They are also date coded during assembly. As a result of injuries sustained by operators of hydraulic products via broken or damaged high pressure hoses Huskie has developed a replacement hose improvement program for our customers. Consult your representative for information. Our hoses come standard with 3/8" male/female couplers.

NOTE: FOR OPERATOR SAFETY WE RECOMMEND HOSE REPLACEMENT AFTER 3 YEARS.

Order Data

NC-1606	3/16" x 6'
NC-1610	3/16" x 10'
RB-1610	3/16" x 10' (Rubber Bound)
NC-1615	3/16" x 15'
NC-1620	3/16" x 20'
NC-1625	3/16" x 25'
NC-450	1/3" x 50' (1/4" NPT Standard Ends)

3/8" NPT hose ends standard. 1/4" NPT also available. Any combination of high pressure couplers are available. Simply specify the kind you require when ordering.

Features

- Highly Visible Safety Orange (RB-1610 is Brown)
- Heavy Duty Shrink Wrap at Hose Ends for Reduced Risk of Leaking
- Date Coded at Point of Assembly

Model NCH-1038

2,250 psi Low Pressure Hydraulic Hose



Our tools are historically used around energized cables, so we catalog only certified, non-conductive, red rubber hose like the **NCH-1038**. Stock hoses are 10 feet long with a 3/8" I.D. and are available with 1/2" or 3/8" hose ends.

These hose ends will match corresponding HTMA type couplers that have 3/8" or 1/2" NPT threads. Hose ends can be attached with any existing couplers with corresponding NPT threads. Longer lengths are achieved by coupling hoses together.

Specifications

Length	10' Twin Hose
Hose ID	3/8"
Hose Ends	3/8" and 1/2"

Features

- Non-Conductive Low Pressure
- 2250 psi
- HTMA Approved

Model SC-SERIES

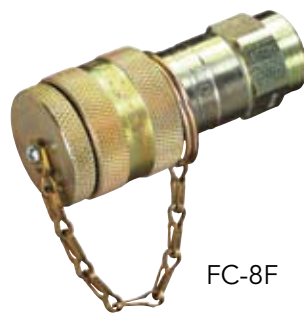
10,000 psi High Pressure Flush Face Couplers

Specifications

Hose End	3/8" NPT
Threaded End	3/8" NPT
Working Pressure	10,000 psi
Minimum Burst Pressure	
Coupled	34,800 psi
Uncoupled	29,000 psi
Hand Connection	250 psi at 150 lbs.
Fluid Loss Per Disconnection	.035 ml

Order Data

SCF-8F	Female Half with Female Port
SCF-8	Female Half with Male End
SCM-8	Male Half with Female Port
FC-8F	Female Half with Female Port
FC-8	Female Half with Male Port
DC-SCF	Female Cap



FC-8F



SCF-8F



SCF-8



SCM-8

The **SC-SERIES** are flush face, snap-type couplers for use in high pressure applications. They are not interchangeable with low pressure flush face couplers. Positive connect or disconnect prevents tool failure due to partial coupled halves of conventional screw-type couplers.

Features

- 10,000 psi Operating Pressure Marked on Both Halves
- Simple Quick Connect and Disconnect
- Twist Sleeve Lock to Prevent Accidental Disconnect
- Flush Face, NON-DRIP Valving, Both Halves

Hydraulic Oil

Order Data

HF-5G	5 Gallon Container
HF-1G	Gallon Container
HG-1Q	Quart Container
HF-5GRED	Red Hydraulic Fluid for Low Temperatures
HF-1GRED	Red Hydraulic Fluid 1 Gallon
HG-1QRED	Red Hydraulic Fluid Quart



Huskie offers replacement **Hydraulic Oil** in three sizes for any service needs. It is our own MV-32 clear hydraulic fluid and can be used in all of our hydraulic products. This fluid can also be added to other clear hydraulic fluids for filling or topping off a hydraulic circuit. Do not mix with other red or blue colored hydraulic fluids as this will "gel" and cause the tool or pump to malfunction. A complete MSDS is available from Huskie upon request.





ADDITIONAL TOOLING & ACCESSORIES

Additional Tooling & Accessories



EZ-HLTSR
P. 91



25CAT
P. 91



ECO-EZHBAG
P. 92



Milwaukee Tools
Pgs. 93-94



REC-P1CASE
P. 92



Fishtape
P. 92



Huskie Hammer
P. 95



Insulated Hand Tools
P. 96



25CAT

Optional Cutter Head Attachment for REC-558U or ECO-EZ558



Specifications

Capacity	500 MCM Cu*
Jaw Opening	1"

* Will not cut ALL 500 MCM copper cable-consult factory.



REC-558U
See page 11



ECO-EZ558
See page 40

Model EZ-HLSTR

Huskie Holster



Specifications

Size	23.5"H x 7"W
------	--------------

Features

- Two Grommets Allow the Holster to Hang in a Bucket
- Very Durable
- Velcro® Sides for Quick Tool Access
- Side Pocket and Carabiner for Extras

Order your own Huskie Holster, the **EZ-HLSTR**, to carry your ECO-EZ tool or any manual hydraulic tool! The Huskie Holster keeps your inline tool close to your side, and Velcro® allows you to quickly grab the tool from the pouch. Two large grommets make it easy to hang the holster inside a bucket. There's a pocket and a key ring on the front for the extras you need while on the job. Each holster also comes with a carabiner. The holster is manufactured by Buckingham.

Huskie Accessories

UDK-1 and PU-15

"U" Die Adapters



UDK-1



PU-15

The **UDK-1** is a "U" die adapter for Kearney-style, 12 ton tools and the **PU-15** is a "U" die adapter for our 15 ton compression tools.

ECO-EZHBAG



Carry tools and accessories with the **ECO-EZHBAG**. The bag is made of weather resistant vinyl and has two Velcro® closures. Large pockets on the outside hold extra accessories. The bag measures 24" in height and 11.5" wide.

REC-P1CASE

Steel Carrying Case



The **REC-P1CASE** stores and carries Huskie Pumps and accessories like extra batteries and crimping heads.

FT-100

Fishtape



This flexible **FT-100** fishtape is made of 3 strand polypropylene and can be kinked without breaking. It is self-contained in its own plastic casing and is 100 feet in length with standard pulling eye.

- Non-conductive
- 3 strand design for multiple bend applications
- 800 lb. safe working load



Model HTI-240-1

1/2" SQ. Drive Impact Wrench – Milwaukee #9079



Battery Not Included

Specifications

Torque	200 ft. lbs. with 14.4 Volt Huskie Battery
Speed	0 – 2,200 Impacts Per Minute
Motor	Variable Speed DC
Socket Retainer	1/2" Sq. Driver Pin/Detent
Length	12" L x 11" H
Weight	9 lbs. with Battery
Battery	Operates on All Huskie 14.4 V Batteries with Adapter or 18V Milwaukee Batteries

Features

- Variable Speed Switch for Maximum User Control, 0-1400 RPM
- Reversing Lever with Trigger Lock-Off Prevents Accidental Activation When Moving Tool with a Bit Installed
- Soft Grip Handle Pad for Operator Comfort and Secure Grip
- Mid-Handle Design for Comfort and Balance
- Huskie Model ADBP-70 Battery Adapter Included with Tool



716-HB
Optional
Square 1/2" to
Hex drive 7/16"

Model HTI-260-1

Sawzall – Milwaukee #6515

Specifications

Weight	8 lbs. with Battery
Length	18" Overall
Motor	Variable Speed
Battery	Operates on All Huskie 14.4 V Batteries with Adapter or Milwaukee 18V Batteries



Battery Not Included

Features

- Keyless Quik-Lok™ Blade Clamp for Fast, Easy Blade Change
- Fully Serviceable Replaceable Brushes
- Accepts Standard 1/2" Shank Sawzall Blades
- Trigger speed Control, Lock-Off Switch
- Reverse the Blade for Cutting Upside Down in Confined Areas
- Pivot shoe for Maximum Support Against Work Surface
- Steel Wobble Plate Mechanism
- Huskie Model ADBP-70 Battery Adapter Included with Tool

Model ADBP-70

Battery Adapter for Milwaukee Tools

Specifications

Size	4.75" x 3" x 2.75"H
Weight	.5 lb.

Features

- Adapts All Huskie BP-70 Series Batteries to Milwaukee 18 V Cordless Tools
- Molded ABS Construction for Maximum Durability
- Approved by Milwaukee Tools for Use on Their 18 V Cordless Tools

U.S. Patent #6,621,246, #6,525,511



The **ADBP-70**, allows you to use any of your Huskie BP-70 Series batteries to work with your Milwaukee 18 Volt cordless tools. This adapter is approved by Milwaukee Tools for use on their tools.



Model HH-SERIES

Modern Hi-Tech Hydraulic Hammers for Purchase or Lease



The **HH-SERIES** Huskie hydraulic hammers pack a powerful punch in any industry. These reliable hammers take the danger out of work associated with air and sledge hand-held vibrating hammers. White finger syndrome, the deadening of hand nerves due to excessive vibration, is a thing of the past with the Huskie mounted hammers.

The HH series hammers can be adapted to most backhoe trenchers, front loaders and skid steers that run off the low pressure hydraulic system on the machine. Typical trenchers and backhoes would include Ditch Witch model numbers 5110 and 6520, and skid steers like Bob Cat, John Deere and Ford New Holland. For dependable performance, our internal hydraulic system is designed to provide most of the firing power. There is no need for high pressure accumulator charges since our hammers use a unique "gas assist" cycle which provides the firing power. Because of our low pressure nitrogen charge, recoil is kept to a minimum which protects the carrier from unnecessary vibration. Our advanced hydraulic design also protects the carrier from hydraulic surges so there is no need for surge damping accumulator. We've engineered our hammers for easy installation and maintenance in the field, no special tools are needed. Our modern, state of the art hammers have only 2 moving parts and 61 total parts. There are four available models designed for utility equipment.

How to Order

Because of the variety of prime movers throughout the industry and arm variation, we need to know the name brand, model number, and if possible serial number in order to supply the correct hammer adapter plates when ordering.

In some instances a hydraulic circuit kit must be installed on the mover to actuate the hammer vibration movement. Circuit kit installation can be requested from the tractor supplier. Specify hammer model number when ordering.

Specifications for HH-150

Operating Pressure	1430-1720 psi
Foot-Pounds	150
Blows/Min	680-1370
Working Weight	270 lbs.
Oil Flow	3.9-8.0 gpm
Carrying Weight	2,500-6,500

Specifications for HH-300

Operating Pressure	1430-1700 psi
Foot-Pounds	300
Blows/Min	600-1200
Working Weight	440 lbs.
Oil Flow	5.3-10.7 gpm
Carrying Weight	5,000-12,000

Specifications for HH-500

Operating Pressure	1430-1850 psi
Foot-Pounds	500
Blows/Min	600-1080
Working Weight	440 lbs.
Oil Flow	6.7-12.0 gpm
Carrying Weight	5,500-14,000

Specifications for HH-750

Operating Pressure	1700-2000 psi
Foot-Pounds	750
Blows/Min	530-1070
Working Weight	675 lbs.
Oil Flow	6.7-13.3 gpm
Carrying Weight	7,500-15,000

Accessory Tools

1. Blunt
2. Moil Point
3. Chisel Point
4. Frost Wedge
5. Asphalt Cutter
6. Tamping Pad

Features

- For Tight Trench Work, Frost Breaking, Sidewalk Removal and Soil Compacting
- Heavier Duty Models Available



Insulated Hand Tools

1000 V Rated Hand Tools



Insulated tools are beginning to emerge as a result of electrical safety related work practice 1910.331 - .335 OSHA standards, to safeguard personnel as well as equipment that is susceptible to shorting out and creating spiking surges to electronic apparatuses. Compliance with these standards will reduce the number of electrical accidents resulting from unsafe work practices by employees.

OSHA has enacted laws making it mandatory for the electrical industry to develop and implement safety procedures, provide safety equipment, and train employee who are exposed to 50 volts or more to ground.

All Huskie insulated hand tools are tested at 10,000 VAC and rated at 1,000 VAC live line use. These tools are double dipped with insulated yellow plastic and have an overcoat of orange protective plastic. When the yellow coat is exposed, the tool should be sent back to Huskie for a recoating.

All tools are top of the line products familiar to operators which include screw drivers, pliers, ratchet wrenches, sockets, box and open end wrenches, nut drivers and most any tool can be insulated. Please contact Huskie for quotation and/or a complete OSHA guideline brochure.

Insulated Box End Wrenches

BEW-12	3/8" Insulated Box End Wrench
BEW-14	7/16" Insulated Box End Wrench
BEW-16	1/2" Insulated Box End Wrench
BEW-18	9/16" Insulated Box End Wrench
BEW-20	5/8" Insulated Box End Wrench
BEW-22	11/16" Insulated Box End Wrench
BEW-24	3/4" Insulated Box End Wrench
BEW-26	13/16" Insulated Box End Wrench
BEW-28	7/8" Insulated Box End Wrench
BEW-30	15/16" Insulated Box End Wrench
BEW-32	1" Insulated Box End Wrench
BEW-34	1-1/16" Insulated Box End Wrench
BEW-36	1-1/8" Insulated Box End Wrench

Insulated Extension Bars

IB38-3	3" Insulated Ext. Bar 3/8 DR
IB38-6	6" Insulated Ext. Bar 3/8 DR

Insulated Hex Sockets

IH12-10	5/16" Insulated Hex Shaft Socket
IH38-10	5/16" Insulated Hex Shaft Socket
IH38-12	3/8" Insulated Hex Shaft Socket

Insulated Ratchets

IR38-LC	3/8" Drive Insulated Ratchet
IR12-LC	1/2" Drive Insulated Ratchet

Insulated Sockets

IS14-18	Insulated 9/16" Socket, 1/3"
IS38-05M	3/8" DR 5 MM 6 PT Insulated Socket
IS38-08M	3/8" DR 8 MM 6 PT Insulated Socket
IS38-10M	3/8" DR 10 MM 6 PT Insulated Socket
IS38-12L	3/8" Insulated Socket 3/8" DR
IS38-13M	3/8" DR 13 MM 6 PT Insulated Socket
IS38-14L	7/16" Insulated Socket 3/8" DR
IS38-14M	3/8" DR 14 MM 6 PT Insulated Socket
IS38-15M	3/8" DR 15 MM 6 PT Insulated Socket
IS38-16L	1/2" Insulated Socket 3/8" DR
IS38-17M	3/8" DR 17 MM 6 PT Insulated Socket
IS38-18L	9/16" Insulated Socket 3/8" DR
IS38-19M	3/8" DR 19 MM 6 PT Insulated Socket
IS38-20L	5/8" Insulated Socket 3/8" DR
IS38-22L	11/16" Insulated Socket 3/8" DR
IS38-24L	3/4" Insulated Socket 3/8" DR
IS38-26L	13/16" Insulated Socket 3/8" DR
IS38-11L	Socket Set 3/8"



Cutting Tool Selection Guide



The marketplace has a variety of cable and rod cutters yet there is not a single cutter capable of cutting “everything”. There are many variables to consider when choosing a cutter, such as, the cable material (copper, aluminum or steel) and the cable type (solid strand, multiple strand, steel core, hardened or soft). Other factors include the type of cut needed (clean or non-distorted as opposed to a jagged cut) and the rod and cable size which should not exceed the cutting capacity.

Cutters should be selected with all of the above factors in mind. As a rule, a few different types of cutters are needed to perform a variety of cutting jobs. Suggested considerations when choosing a cutter include:

1. What is the most frequently cut cable or rod size, type, and what kind of cut is needed?
2. How much time can be saved by using this tool compared to your usual way of cutting?
3. What kind of power source do you need: portable, electric, or gasoline?
4. How often will you be using this tool per day?
5. What are the ergonomic and safety benefits for the user?
6. Consider the quality of the products; are parts and repair services available?
7. What is the reputation of the company you are purchasing from?
8. Cost is the last consideration since your chosen cutter will pay for itself over the next few jobs.

Compression Tool Selection Guide



When choosing a compression tool, the output tonnage, the jaw opening, and type of tool (electric, battery driven, or mechanical) are the major considerations. Your tool choice should be based on the following guidelines:

1. What is the size of the most commonly compressed cable or sleeve. The cable should be able to fit between the jaws for easy removal after crimping.
2. Consider the physical tool size, ease of handling and operation.
3. What is the frequency of operation? Is this just part of the job or is this a production job requiring constant running of the tool?
4. Is the tool ergonomically designed to protect the operator from all hazards?
5. Choose to buy from a company which stands behind its products. This will usually ensure that parts, service, and dealers are readily available to service your needs.
6. Pricing is your last consideration since the proper tool will pay for itself over the next few jobs and be working for you over the next several years.

ACSR Cutting Guide

Use Huskie REC-54 For These Cable Sizes

ACSR Code	Cir. Mills or A.W.G.	ACSR Code	Cir. Mills or A.W.G.	ACSR Code	Cir. Mills or A.W.G.	ACSR Code	Cir. Mills or A.W.G.
Turkey	6	Owl	266	Lark	397	Peacock	605
through		Partridge	266	Pelican	477	Squab	605
Robin	1	Ostrich	300	Flicker	477	Teal	605
Raven	1/0	Merlin	336	Hawk	477	Rook	636
Quail	2/0	Linnet	336	Hen	477	Grosbeak	636
Pigeon	3/0	Oriole	336	Parakeet	556	Egret	636
Penguin	4/0	Chickadee	397	Dove	556	DO NOT CUT Guy Wire, Ground Rod or Bolts	
Waxwing	266	Ibis	397	Eagle	556		



Use Huskie REC-S540 For These Cable Sizes

ACSR Code	Cir. Mills or A.W.G.	ACSR Code	Cir. Mills or A.W.G.	Material	Size
Flamingo	666	*Drake	795	Standard Guy Wires	5/8"
Crow	715	Condor	795	Bolt	5/8"
Starling	715	Mallard	795	Ground Rod	3/4"
Redwing	715				



*Use Huskie S-55 or SP-55 to cut Drake Cable!

Use Huskie S-55, SP-55 or REC-S3550 For These Cable Sizes

ACSR Code	Cir. Mills or A.W.G.	ACSR Code	Cir. Mills or A.W.G.	Material	Size
Crane	874	Finch	1113	Standard Guy Wires	3/4"
Canary	900	Pheasant	1272	Bolt	7/8"
Cardinal	954	Plover	1431	Ground Rod	3/4"
Curlew	1033	Falcon	1590		



If you have any questions about capacities or special applications, please contact Huskie Tools at 1-800-860-6170.



Huskie Representative Directory

UNITED STATES

ALABAMA

T. C. I. Sales, Inc.
2603 Moody Parkway, Suite 202
Moody, AL 35004
Phone: (205) 640-7099
Cell: (205) 936-0735
Fax: (205) 640-2330
swilson@tci-sales.com
www.tci-sales.com

ALASKA

Carlson Sales, Inc.
9317 NE Hwy 99, Suite O
Vancouver, WA 98665
Phone: (360) 573-8203
Fax: (360) 573-8289
www.carlson-sales.com

ARIZONA

Clark Power Products, Inc.
10752 N. 89th Place, Suite 104
Scottsdale, AZ 85260
Phone: (480) 661-8599
Fax: (480) 614-0125
sales@clarkpowerproducts.com

ARKANSAS

Aertker Company
2412 Marietta Street
Kenner, LA 70063
Phone: 504-469-0136
Fax: 504-910-0070
sales@aertkerco.com
www.aertkerco.com

CALIFORNIA - NORTHERN

Isberg Nott Company
4725 First St. Suite 265
Pleasanton, CA 94566
Phone: (925) 426-4718
Fax: (925) 426-0323
isberg-nott@isberg-nott.com

CALIFORNIA - SOUTHERN

McAvoy & Markham, Inc.
16 Technology Dr., Suite 113
Irvine, CA 92618
Phone: (949) 727-3966
Fax: (949) 727-3910
sales@mcavoy-markham.com
www.mcavoy-markham.com

COLORADO

Mountain States Utility Sales
721 Gateway Avenue
Fort Morgan, CO 80701
Phone/Fax: (970) 867-3731
sam@msutilitysales.com

CONNECTICUT

UCI Sales Group, LLC.
22 Whiteside St.
Newington, CT 06111
Phone: (860) 667-4766
Fax: (860) 667-4766
sales@ucisales.com

DELAWARE

RN Utility Sales, Inc.
25 Progress St.
Edison, NJ 08820
Phone: (908) 561-4028
Fax: (908) 561-4833
sales@rnutilitysales.com
www.rnutilitysales.com

FLORIDA - EXCEPT PAN HANDLE

Action Utility Products, Inc.
701 N. Parsons, Suite D
Brandon, FL 33510
Phone: (813) 684-5800
Fax: (813) 684-5808
actionutility@verizon.net
www.actionutility.com

FLORIDA - PAN HANDLE

T. C. I. Sales, Inc.
2603 Moody Parkway, Suite 202
Moody, AL 35004
Phone: (205) 640-7099
Cell: (770) 337-0138
Fax: (205) 640-2330
eshelton@tci-sales.com
www.tci-sales.com

GEORGIA

T. C. I. Sales, Inc.
2603 Moody Parkway, Suite 202
Moody, AL 35004
Phone: (205) 640-7099
Cell: (770) 337-0138
Fax: (205) 640-2330
eshelton@tci-sales.com
www.tci-sales.com

HAWAII

Carlson Sales, Inc.
9317 NE Hwy 99, Suite O
Vancouver, WA 98665
Phone: (360) 573-8203
Fax: (360) 573-8289
www.carlson-sales.com

IDAHO

Carlson Sales, Inc.
9808 NE 126th Ave., Bldg. C
Vancouver, WA 98665
Phone: (360) 573-8203
Fax: (360) 573-8289
www.carlson-sales.com

IDAHO - NORTH

Carlson Sales, Inc.
9317 NE Hwy 99, Suite O
Vancouver, WA 98665
Phone: (360) 573-8203
Fax: (360) 573-8289
www.carlson-sales.com

ILLINOIS

Utility Sales, Inc.
930 E. Oak St., Suite 1
Lake In The Hills, IL 60156
Phone: (800) 253-6248
Fax: (800) 498-8078
info@utilitysales.net
www.utilitysales.net

INDIANA

REPCO
324 Parkview Dr.
P.O. Box 367
New Castle, IN 47362
Phone: (765) 521-2915
Fax: (765) 521-2916
cheryl@roynon.com
www.roynon.com

INDIANA - NORTHWEST

Utility Sales, Inc.
930 E. Oak St., Suite 1
Lake In The Hills, IL 60156
Phone: (800) 253-6248
Fax: (800) 498-8078
info@utilitysales.net
www.utilitysales.net

IOWA

Moehn Electrical Sales, Inc.
6401 N. 90th Street
Omaha, NE 68134-0817
Phone: (402) 572-7875
Fax: (402) 572-7845
jmoehn@moehnsales.com
www.moehnsales.com

KANSAS

Moehn Electrical Sales, Inc.
6401 N. 90th Street
Omaha, NE 68134-0817
Phone: (402) 572-7875
Fax: (402) 572-7845
jmoehn@moehnsales.com
www.moehnsales.com

KENTUCKY

Saver Sales
121 Malabu Dr. Suite 9
Lexington, KY 40503
Phone: (859) 260-1944
Fax: (859) 260-1844
sales@saversales.com
www.saversales.com

LOUISIANA

Aertker Company
2412 Marietta Street
Kenner, LA 70063
Phone: 504-469-0136
Fax: 504-910-0070
sales@aertkerco.com
www.aertkerco.com

MAINE

UCI Sales Group, LLC.
22 Whiteside St.
Newington, CT 06111
Phone: (860) 667-4766
Fax: (860) 667-4766 *51
sales@ucisales.com

MARYLAND - NORTHERN

RN Utility Sales, Inc.
25 Progress St.
Edison, NJ 08820
Phone: (908) 561-4028
Fax: (908) 561-4833
sales@rnutilitysales.com
www.rnutilitysales.com

MARYLAND - SOUTHERN

Utility Service Agency, Inc.
501 N. Main St.
Wake Forest, NC 27587
Phone: (919) 556-6131
Fax: (919) 556-7984
sales@utilityserviceagency.net
www.utilityserviceagency.net

MASSACHUSETTS

UCI Sales Group, LLC.
22 Whiteside St.
Newington, CT 06111
Phone: (860) 667-4766
Fax: (860) 667-4766
sales@ucisales.com

MICHIGAN

Utility Sales, Inc.
930 E. Oak St., Suite 1
Lake In The Hills, IL 60156
Phone: (800) 253-6248
Fax: (800) 498-8078
info@utilitysales.net
www.utilitysales.net

MINNESOTA

Minnkota Sales
Div. of Lee Noonan Co.
2230 County Road H2
Mounds View, MN 55112
Phone: (763) 560-1228
Fax: (763) 560-3282
Steve@leenoonan.com
Jeff@leenoonan.com

MISSISSIPPI - NORTHERN

Aertker Company
2412 Marietta Street
Kenner, LA 70063
Phone: 504-469-0136
Fax: 504-910-0070
sales@aertkerco.com
www.aertkerco.com

MISSISSIPPI - SOUTHERN

T. C. I. Sales, Inc.
2603 Moody Parkway, Suite 202
Moody, AL 35004
Phone: (205) 640-7099
Cell: (205) 936-0735
Fax: (205) 640-2330
swilson@tci-sales.com
www.tci-sales.com

MISSOURI - EASTERN

Utility Sales, Inc.
930 E. Oak St., Suite 1
Lake In The Hills, IL 60156
Phone: (800) 253-6248
Fax: (800) 498-8078
info@utilitysales.net
www.utilitysales.net



Huskie Representative Directory

MISSOURI - WESTERN

Moehn Electrical Sales, Inc.
6401 N. 90th Street
Omaha, NE 68134-0817
Phone: (402) 572-7875
Fax: (402) 572-7845
jmoehn@moehnsales.com
www.moehnsales.com

MONTANA

Carlson Sales, Inc.
9808 NE 126th Ave., Bldg. C
Vancouver, WA 98665
Phone: (360) 573-8203
Fax: (360) 573-8289
www.carlson-sales.com

NEBRASKA

Moehn Electrical Sales, Inc.
6401 N. 90th Street
Omaha, NE 68134-0817
Phone: (402) 572-7875
Fax: (402) 572-7845
jmoehn@moehnsales.com
www.moehnsales.com

NEVADA - NORTHERN

Isberg Nott Company
4725 First St. Suite 256
Pleasanton, CA 94566
Phone: (925) 426-4718
Fax: (925) 426-0323
isberg-nott@isberg-nott.com

NEVADA - SOUTHERN

Clark Power Products, Inc.
10752 N. 89th Place, Suite 104
Scottsdale, AZ 85260
Phone: (480) 661-8599
Fax: (480) 614-0125
sales@clarkpowerproducts.com

NEW HAMPSHIRE

UCI Sales Group, LLC.
22 Whiteside St.
Newington, CT 06111
Phone: (860) 667-4766
Fax: (860) 667-4766 *51
sales@ucisales.com

NEW JERSEY

RN Utility Sales, Inc.
25 Progress St.
Edison, NJ 08820
Phone: (908) 561-4028
Fax: (908) 561-4833
sales@rnutilitiesales.com
www.rnutilitiesales.com

NEW MEXICO

Clark Power Products, Inc.
10752 N. 89th Place, Suite 104
Scottsdale, AZ 85260
Phone: (480) 661-8599
Fax: (480) 614-0125
sales@clarkpowerproducts.com

NEW YORK - METROPOLITAN

RN Utility Sales, Inc.
25 Progress St.
Edison, NJ 08820
Phone: (908) 561-4028
Fax: (908) 561-4833
sales@rnutilitiesales.com
www.rnutilitiesales.com

NEW YORK - UPSTATE

UCI Sales Group, LLC.
179 David Road
Rutland, VT 05701
Phone: (802) 773-7380
Fax: (802) 773-7380
sales@ucisales.com

NORTH CAROLINA

Utility Service Agency, Inc.
501 N. Main St.
Wake Forest, NC 27587-1169
Phone: (919) 556-6131
Fax: (919) 556-7984
sales@utilityserviceagency.net
www.utilityserviceagency.net

NORTH DAKOTA

Minnkota Sales
Div. of Lee Noonan Co.
2230 County Road H2
Mounds View, MN 55112
Phone: (763) 560-1228
Fax: (763) 560-3282
Steve@leenoonan.com
Jeff@leenoonan.com

OHIO

REPCO
1021 E. Findlay St.
P.O. Box 267
Carey, OH 43316
Phone: (800) 500-4009
Fax: (419) 396-7619
cassie@roynon.com
www.roynon.com

OKLAHOMA

Jones Power Products
12969 Hunters Ridge
Blanchard, OK 73010
Phone: (405) 485-2019
Fax: (405) 485-3484
www.jonespowerproducts.com

OREGON

Carlson Sales, Inc.
9317 NE Hwy 99, Suite O
Vancouver, WA 98665
Phone: (360) 573-8203
Fax: (360) 573-8289
www.carlson-sales.com

PENNSYLVANIA

Strategic Partners of PA Inc.
12 Denise Drive
Thornton, PA 19373
Phone: (610) 459-2117
Fax: (610) 459-9140
pwars@comcast.net
www.sppa.biz

RHODE ISLAND

UCI Sales Group, LLC.
22 Whiteside St.
Newington, CT 06111
Phone: (860) 667-4766
Fax: (860) 667-4766
sales@ucisales.com

SOUTH CAROLINA

Utility Service Agency, Inc.
501 N. Main St.
Wake Forest, NC 27587-1169
Phone: (919) 556-6131
Fax: (919) 556-7984
sales@utilityserviceagency.net
www.utilityserviceagency.net

SOUTH DAKOTA

Minnkota Sales
Div. of Lee Noonan Co.
2230 County Road H2
Mounds View, MN 55112
Phone: (763) 560-1228
Fax: (763) 560-3282
Steve@leenoonan.com
Jeff@leenoonan.com

TENNESSEE - EASTERN & MIDDLE

Saver Sales
121 Malabu Dr, Suite 9
Lexington, KY 40503
Phone: (859) 260-1944
Fax: (859) 260-1844
sales@saversales.com
www.saversales.com

TENNESSEE - WESTERN

Aertker Company
2412 Marietta Street
Kenner, LA 70063
Phone: 504-469-0136
Fax: 504-910-0070
sales@aertkerco.com
www.aertkerco.com

TEXAS - NORTH

Utility Sales Agents of N. Texas
12220 Ford Rd., Suite 110
Dallas, TX 75234
Phone: (972) 243-0977
Fax: (972) 243-4579
www.utilitysalesagents.com

TEXAS - SOUTH

Wiltex Electrical Sales, Inc.
9310 Campbell Rd.
Houston, TX 77080
Phone: (713) 464-4817
Fax: (713) 465-4360
www.wiltex.com

TEXAS - EL PASO

Clark Power Products, Inc.
10752 N. 89th Place, Suite 213
Scottsdale, AZ 85260
Phone: (480) 661-8599
Fax: (480) 614-0125
sales@clarkpowerproducts.com

UTAH

Carlson Sales, Inc.
9808 NE 126th Ave., Bldg. C
Vancouver, WA 98665
Phone: (360) 573-8203
Fax: (360) 573-8289
www.carlson-sales.com

VERMONT

UCI Sales Group, LLC.
179 David Road
Rutland, VT 05701
Phone: (802) 773-7380
Fax: (802) 773-7380
sales@ucisales.com

VIRGINIA

Utility Service Agency, Inc.
501 N. Main St.
Wake Forest, NC 27587-1169
Phone: (919) 556-6131
Fax: (919) 556-7984
sales@utilityserviceagency.net
www.utilityserviceagency.net

WASHINGTON

Carlson Sales, Inc.
9808 NE 126th Ave. Bldg. C
Vancouver, WA 98682
Phone: 360-573-8203
Fax: 360-573-8289
www.carlson-sales.com

WEST VIRGINIA - NORTHERN

Strategic Partners of PA Inc.
12 Denise Drive
Thornton, PA 19373
Phone: (610) 459-2117
Fax: (610) 459-9140
pwars@comcast.net
www.sppa.biz

WEST VIRGINIA - SOUTHERN

Utility Service Agency, Inc.
501 N. Main St.
Wake Forest, NC 27587-1169
Phone: (919) 556-6131
Fax: (919) 556-7984
sales@utilityserviceagency.net
www.utilityserviceagency.net

WISCONSIN

Utility Sales, Inc.
930 E. Oak St., Suite 1
Lake in the Hills, IL 60156
Phone: (800) 253-6248
Fax: (800) 498-8078
info@utilitysales.net
www.utilitysales.net

WYOMING

Mountain States Utility Sales
721 Gateway Avenue
Fort Morgan, CO 80701
Phone/Fax: (970) 867-3731
sam@msutilitysales.com



Huskie Representative Directory

CANADA

ALBERTA - NWT - YUKON

LineStar Utility Supply
#1-1381 Hastings Crescent S.E.
Calgary, AB T2G 4C8
Phone: (403) 243-1900
Fax: (403) 243-2063
salesab@linestar.ca
www.linestar.ca

BRITISH COLUMBIA

LineStar Utility Supply
Unit #4, 8125 130 Street
Surrey, BC V3W 7X4
Phone: (604) 594-2701
Fax: (604) 594-2751
sales@linestar.ca
www.linestar.ca

NOVA SCOTIA

Harris & Roome Supply
Division of Graybar Canada
260 Brownlow Avenue
Dartmouth, NS B2Y 3Z6
Phone: (902) 456-0114
Fax: (902) 468-3995
gbarron@graybarcanada.com

NEWFOUNDLAND

Harris & Roome Supply
Division of Graybar Canada
47 Pippy Place
St. John's, NF A1B 3T1
Phone: (709) 722-6161
Fax: (709) 722-8886
pbragg@graybarcanada.com

NEW BRUNSWICK & PRINCE EDWARD ISLAND

Harris & Roome Supply
Division of Graybar Canada
668 Prospect Street
Fredericton, NB E3B 6G9
Phone: (506) 458-8265
Fax: (506) 452-9753
bgammon@graybarcanada.com

ONTARIO

PEFCO Ontario
1734 Finch Avenue
Pickering, Ontario L1V 1K4
Phone: (905) 427-9294
Fax: (905) 427-0540
jmasonpefco@sympatico.ca

QUEBEC

Innova Inc.
1129-1 Roberval Sud
Granby, QC J2G 8C8
Phone: (800) 461-1937
Fax: (450) 372-9936
charlene.dover@innova2000.ca

SASKATCHEWAN & MANITOBA

Prairie Central Line Supply Ltd.
1258 Border St.
Winnipeg, MB R3H 0M6
Phone: (204) 633-1804
Toll Free: 800-701-4441
Fax: (204) 633-1183
sales@pclsupply.mb.ca

MEXICO

TAMPICO

Equipos Electricos Para Alta Tension
AV. Hidalgo #2006-2
Col. Altavista C.P.
Tampico, TAM, Mexico 89240
Phone: (1) 213-41-94
Fax: (1) 213-37-12

LATIN AMERICA & CARIBBEAN

Advanced Power Systems, LLC
33 Old Hickory Boulevard
Jackson, Tennessee 38305
Phone: (731) 891-1139
Fax: (731) 891-9437
www.apslc.net

Authorized Service Centers

UNITED STATES

COLORADO

Q.U.E.S.T Inc.
812 Baseline Place #4
Brighton, CO 80601
Phone: (720) 685-9091
Fax: (720) 655-8143

ILLINOIS

Huskie Tools, Inc.
198 N. Brandon Dr.
Glendale Heights, IL 60139
Phone: (800) 860-6170
Fax: (800) 345-3767

MASSACHUSETTS

Hydron Inc.
273 Weymouth St.
Rockland, MA 02370
Phone: (781) 871-1920
Fax: (781) 878-1507

MICHIGAN

Consumers Energy
Tool Repair and Salvage Shop
1955 W. Parnall
Jackson, MI 49201
Phone: (517) 788-1382
Fax: (517) 768-3655

MINNESOTA

Total Tool Supply, Inc.
315 N. Pierce St.
St. Paul, MN 55104
Phone: (651) 646-4055
Fax: (651) 646-8610

NEW JERSEY (METRO)

Metro Hydraulic Jack Co.
1271 McCarter Hwy.
Newark, NJ 07104
Phone: (973) 350-0111
Fax: (973) 350-0112

NEW YORK - UPSTATE

Linemen's Supply, Inc.
30 Travis Ave.
Binghamton, NY 13904
Phone: (607) 773-2405
Fax: (607) 773-2414

NEW YORK - METROPOLITAN

New Draulic Tools, Inc.
796 E. 140th Street
Bronx, NY 10454
Phone: (718) 292-0680
Fax: (718) 993-3376
(888) 237-3962
www.newdraulictools.com

VIRGINIA

Special Fleet
2500 S. Main St.
Harrisonburg, VA 22801
Phone: (800) 796-9027
Fax: (540) 438-9502
www.specialfleet.com

WASHINGTON

Rohlinger Enterprises, Inc.
18832 Division
P.O. Box 1340
Suquamish, WA 98392
Phone: (360) 598-4287
Fax: (360) 598-6166

CANADA

ALBERTA - NWT - YUKON

LineStar Utility Supply
#1-1381 Hastings Crescent S.E.
Calgary, AB T2G 4C8
Phone: (403) 243-1900
Fax: (403) 243-2063
salesab@linestar.ca
www.linestar.ca

BRITISH COLUMBIA

LineStar Utility Supply
Unit #4, 8125 130 Street
Surrey, BC V3W 7X4
Phone: (604) 594-2701
Fax: (604) 594-2751
sales@linestar.ca
www.linestar.ca

ONTARIO

PEFCO Ontario
1734 Finch Avenue
Pickering, Ontario L1V 1K4
Phone: (905) 427-9294
Fax: (905) 427-0540
jmasonpefco@sympatico.ca

QUEBEC

Innova
1129-1 Roberval Sud
Granby, QC J2G 8C8
Phone: (800) 461-1937
Fax: (450) 372-9936
charlene.dover@innova2000.ca

SASKATCHEWAN & MANITOBA

Prairie Central Line Supply Ltd.
1258 Border St.
Winnipeg, MB R3H 0M6
Phone: (204) 633-1804
Toll Free: 800-701-4441
Fax: (204) 633-1183
sales@pclsupply.mb.ca

MEXICO

Equipos Electricos Para Alta Tension
AV. Hidalgo #2006-2
Col. Altavista C.P.
Tampico, TAM, Mexico 89240
Phone: (1) 213-41-94
Fax: (1) 213-37-12



Index

Numbers

25CAT 11, 40

A

Accessories 92
ACSR Cutting Guide 98
ADBP-70 95
Additional Tooling & Accessories 90
AS-025 78
AS-118 78
Authorized Service Centers 101

B

Batteries 45
BP-70E 45
BP-70EI 45
BP-70MH 45

C

Cable Stripper 78
CH-35R 46
CH-70DCH 46
Charger 46
CN-58H 52
CN-258 49
Compression Tool Selection Guide 97
Cutting Tool Selection Guide 97

D

DA-12 77
DIE-CASE 65
Die Chart 64

E

ECO-258 41
ECO-630 43
ECO-750 44
ECO-EZ 39
ECO-EZHBAG 92
ECO-EZ558 40
ECO-ND 42
EP-60D 58
EP-60DT 58
EP-60W 57
EP-60WT 57
EP-100WB 59
EP-200WA 59
EP-410 50
EP-410H 54
EP-410HT 54
EP-430 51

EP-430H 55
EP-510C 51
EP-510HC 55
EP-510HK 56
EP-510K 52
EP-610H 56
EP-630A 49
EP-630HA 53
EP-750A 50
EP-750HA 53
EZ-HLSTR 91

F

Foot Switch 86
FP-700 81
FS-14 86

G

Gauges 66

H

HA60-SERIES 63
HA100-SERIES 63
HH-SERIES 95
HP-700 81
HPG-4 83
HT41-SERIES 61
HT58-SERIES 60
HT61-SERIES 62
HTI-240-1 93
HTI-260-1 94
HTK CASE 65
HTK-SERIES 62
HT-SERIES 60
Huskie Holster 91
Huskie Representative Directory 99-101
Hydraulic Compression 48
Hydraulic Hammers 96
Hydraulic Hose 87
Hydraulic & Manual Cutting Tools 68
Hydraulic Oil 88
Hydraulic Pumps & Punches 80

I

Insulated Hand Tools 96
Insulation Stripper 78

M

MC-500 77

N

NCH-1038 87



Index

NC-SERIES.....	87
NP-400	78

O

Order Data	10
------------------	----

P

PG-1	66
PG-4	66
PG-15	66
PG-58	66
PG-610	66
PG-ND	66
PU-15.....	92

R

R-14EA.....	82
R-14EAD.....	83
R-14EF.....	82
R-750B.....	69
RC-5	83
REC-5ND.....	12
REC-50U.....	28
REC-54.....	30
REC-54AC.....	29
REC-530Y.....	24
REC-534YC.....	25
REC-558U.....	11
REC-560YC.....	26
REC-585YC.....	27
REC-3410.....	16
REC-3510.....	18
REC-3510K	20
REC-3610.....	22
REC-5430.....	17
REC-5510.....	19
REC-5510K	21
REC-5630.....	14
REC-5750.....	15
REC-CN558	13
REC-MDT.....	23
REC-P1	37, 84
REC-P1CASE	92
REC-S520.....	32
REC-S524H.....	33
REC-S524CC	34
REC-S540.....	35
REC-S3550.....	36
REC-Y33	31
RI-500	69

S

S-16	71
S-20	71
S-32	71
S-32CC	71
S-40B.....	71
S-55	71
S-85	71
S-240.....	71
S-240CC	71
SC-SERIES	88
SH-70M.....	85
SP-20	73
SP-24	73
SP-24CC	73
SP-32	73
SP-32CC1	73
SP-40	73
SP-55	73
SP-85	73
SP-100.....	73
SP-SERIES.....	72
S-SERIES.....	70

U

"U" Die Adapters	92
UDK-1	92
URH-14	86

W

Warranty Policy.....	6
Wire Rope Dies.....	65

Y

YS-30	74
YS-34	75
YS-60	76
YSP-30	74
YSP-34	75
YSP-60	76
YSP-85YC.....	76



Huskie Tools Ambassadors



Bill Adrian



James Chapman



Dennis Liebelt



John Pozniak



Harry Cottrill



Joe Campbell



Steve Long



Richard Jurey



Clyde Legg



Dennis McClellan



Burt Duncan



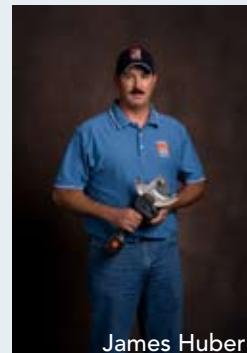
Jesse Simmons



Jim Evard



Paul Kirby



James Huber



Joey Ducote



Cory Hightower



Jason Langworthy



Al Withers



Don Smith



Richard Sanders



Neal Walker



Bruce Oakes

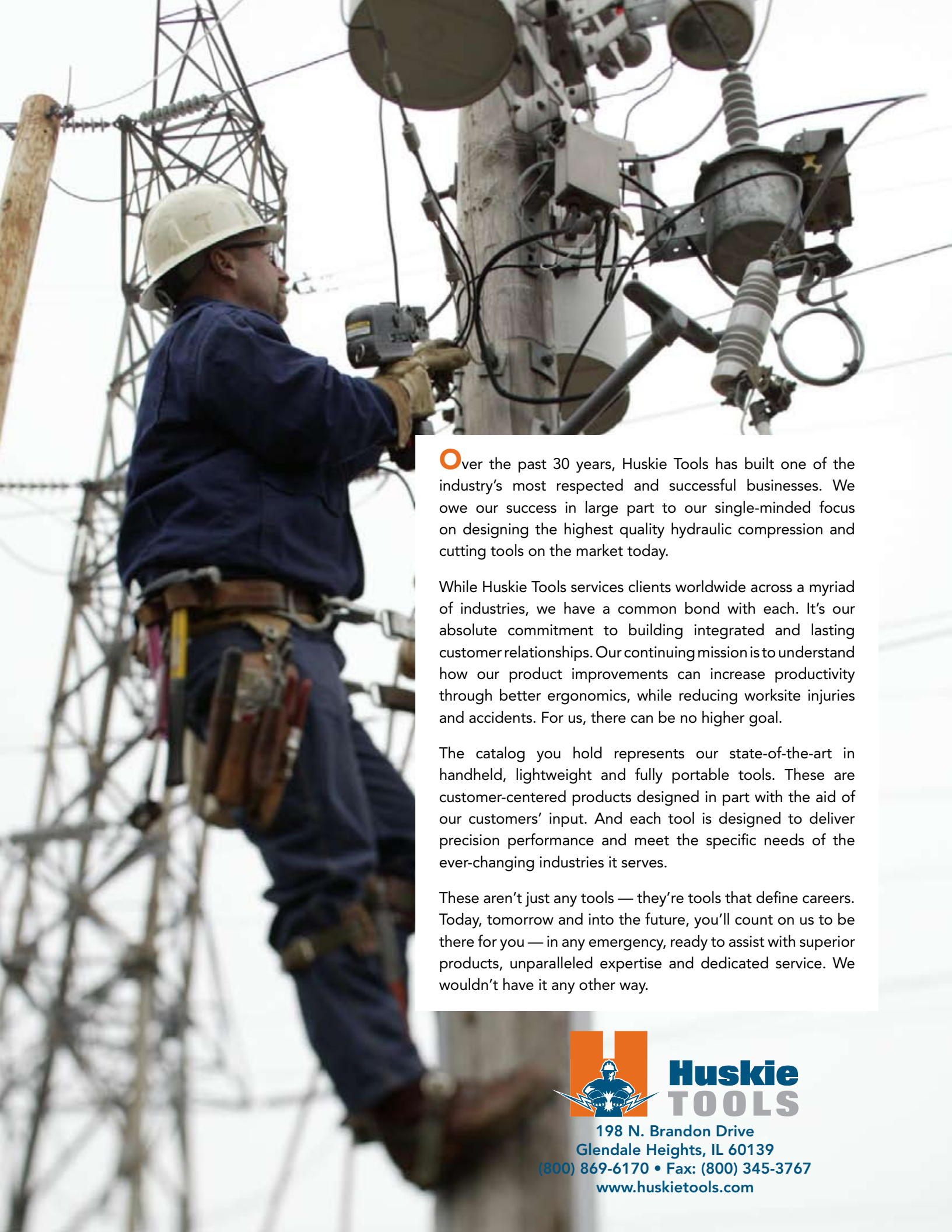
Thank You!

There's no such thing as compromise for experienced linemen.

They don't know the meaning of the word "quit" and there's no "halfway done". They take pride in their work.

They are the best of the best, and that's why Huskie has chosen these individuals as Ambassadors.





Over the past 30 years, Huskie Tools has built one of the industry's most respected and successful businesses. We owe our success in large part to our single-minded focus on designing the highest quality hydraulic compression and cutting tools on the market today.

While Huskie Tools services clients worldwide across a myriad of industries, we have a common bond with each. It's our absolute commitment to building integrated and lasting customer relationships. Our continuing mission is to understand how our product improvements can increase productivity through better ergonomics, while reducing worksite injuries and accidents. For us, there can be no higher goal.

The catalog you hold represents our state-of-the-art in handheld, lightweight and fully portable tools. These are customer-centered products designed in part with the aid of our customers' input. And each tool is designed to deliver precision performance and meet the specific needs of the ever-changing industries it serves.

These aren't just any tools — they're tools that define careers. Today, tomorrow and into the future, you'll count on us to be there for you — in any emergency, ready to assist with superior products, unparalleled expertise and dedicated service. We wouldn't have it any other way.



Huskie
TOOLS

198 N. Brandon Drive
Glendale Heights, IL 60139
(800) 869-6170 • Fax: (800) 345-3767
www.huskietools.com